

DC-27



# Dash Camera with 2.7" Display

## User Manual



ECHOMASTER

# Installation Guide



**DC-27**

Dash Camera with 2.7" Display

## Introduction

**Thank you for purchasing your EchoMaster DVR Dash Camera.**

Drive record and share. Capture that shareable moment on your next roadtrip or protect yourself with a video witness during an unexpected event.

Please ensure you read and understand all aspects of this manual before using your EchoMaster Dash Camera.

## Box Contents

- ▶ DVR Camera
- ▶ Power Adapter
- ▶ Windshield Mount
- ▶ USB Cable
- ▶ Manual

## Key Features

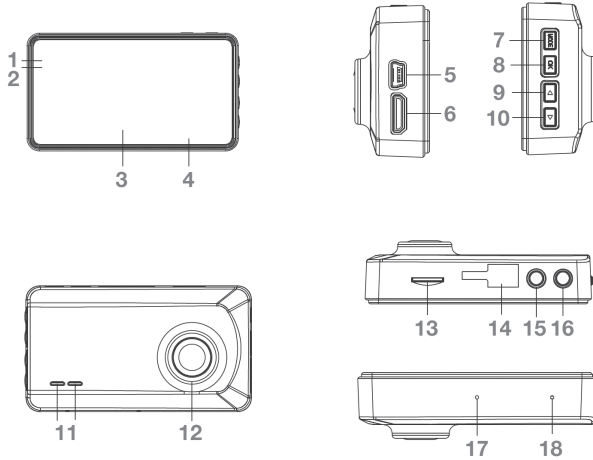
- ▶ 2.7" 16:9 LED Screen
- ▶ 1080p High Definition Recording @ 30FPS
- ▶ Built in G-Sensor
- ▶ Internal Microphone
- ▶ HDMI Output (cable not included)

## DC-27

Dash Camera with 2.7" Display



## Dash Camera Functions



- |                 |                 |                  |                  |                  |
|-----------------|-----------------|------------------|------------------|------------------|
| 1. Power LED    | 2. Charging LED | 3. LCD Screen    | 4. Screen Cover  | 5. Mini-USB Port |
| 6. HDMI Output  | 7. Mode Button  | 8. OK Button     | 9. Up Button     | 10. Down Button  |
| 11. Speaker     | 12. Lens        | 13. SD Card Slot | 14. Bracket Slot | 15. Power Button |
| 16. Menu Button | 17. Microphone  | 18. Reset        |                  |                  |

## Button Functions

Key	Functions
<b>POWER</b>	Press and hold to power on, Press and hold to power off
<b>MENU</b>	Enter menu for all functions
<b>OK</b>	Press to confirm / select an option
<b>MODE</b>	Press to change the modes (Photo, Video, Playback)
<b>UP</b>	Move Up
<b>DOWN</b>	Move Down
<b>RESET</b>	Reset

# Installation Guide



**DC-27**

Dash Camera with 2.7" Display

## LED Indicators

Light	Functions
<b>POWER CHARGING</b>	The GREEN LED will illuminate when the unit is on The RED LED will illuminate when charging

## Operating Instructions

### Power On & Power Off

Press and hold the power key to power on. When on, press and hold the button again to turn off. When the battery is low, the device will alert you and power off automatically. When power is supplied to the USB port the device will turn on and start recording automatically. When power is removed the device will save the current recording and shut down automatically.

### Charging

The device can be charged by a USB port of a computer or alternatively via the supplied cigarette lighter adaptor.

### Inserting & Removing a Micro SD card

To insert a micro SD card push it into the slot until it clicks into place. Please note that the card will only fit into the slot in one orientation. To remove the card push it in slightly until a click is heard and then release. The SD card will then pop out.

## Basic Operation

**There are 3 modes for the device**

▶ Video mode

▶ Capture mode

▶ Playback mode

When the device is powered up it will automatically enter the video mode and begin recording.

# Installation Guide

## DC-27

Dash Camera with 2.7" Display



## Video Mode

If the unit is not currently recording then pressing the OK button will start, pressing it again will stop recording. While recording you can use the UP and DOWN buttons to zoom IN and OUT.



To enter the video menu first you must stop the recording and then press the M button. The Settings available in this menu are as follows:



# Installation Guide



**DC-27**

Dash Camera with 2.7" Display

## Resolution

This changes the image quality of the recording. For full HD you should set this to 1080FHD. Other options available are 720P, WVGA and VGA

## Loop Record

This option sets the recording segment time. This means that each segment of recording will be the set length and then a new segment will be started. You can also turn this off which will then set the unit to record a single video file until the SD card is full at which point it will overwrite the SD card from the beginning.

## HDR

Setting the HDR to ON (recommended) will provide a more vibrant image with more defined colors.

## Exposure

You can adjust the exposure of the lens to any of the following values;  
+2.0, +5/3, +4/3, +1.0, +2/3, +0.0, -1/3, -2/3, -1.0, -4/3, -5/3, -2.0

## Motion Detection

When this setting is turned on the camera will detect any movement within its view and start recording automatically. The recording will stop 10 seconds after movement stops. For this feature to work the camera must remain powered even if the vehicle is ignition is turned off.

## Record Audio

The unit records audio via the built-in microphone. This can be turned off by selecting OFF in this menu.

## Date Stamp

If switched on this feature will display the recording date and time on any recording. If switched off this will not be shown (although it will still be displayed on screen)

## G-Sensor

The unit has a built-in G-Sensor which, when triggered, will lock the current recording file and prevent it from being overwritten. The sensitivity of this sensor can be adjusted in this menu.

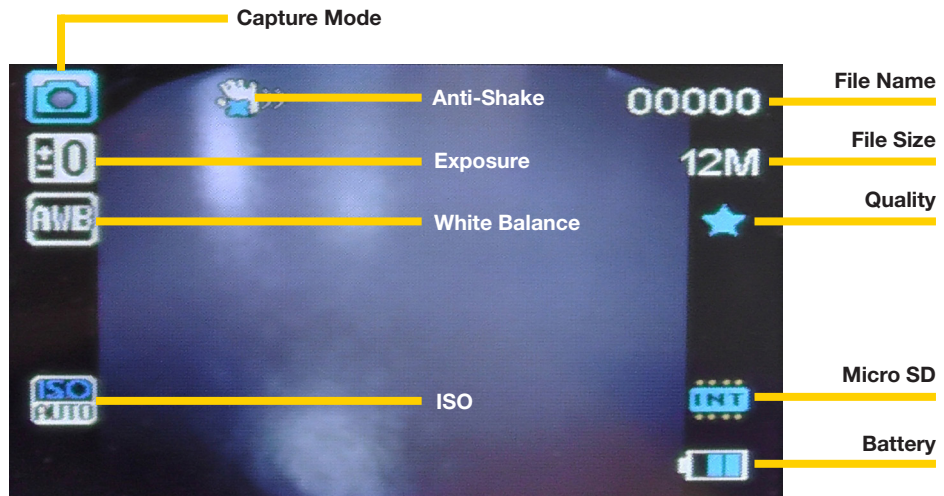
## DC-27

Dash Camera with 2.7" Display



## Capture Mode

If the unit is not currently recording then pressing the OK button will start, pressing it again will stop recording. While recording you can use the UP and DOWN buttons to zoom IN and OUT.



Pressing the M button in capture mode will enter the menu which will provide you with the following options (see next page)



# Installation Guide



**DC-27**

Dash Camera with 2.7" Display

## Capture Mode

In this menu you can set a timed delay for image capture of 2, 5 or 10 seconds.

## Resolution

The highest resolution available is 12 megapixels but you can reduce the quality to save on storage space if necessary. The other options available are 10MP, 5MP, 3MP, 2MP, 1.3MP and VGA (640x480).

## Sequence

Turning on this option will put the camera into burst mode where each press of the OK button will take 3 pictures in succession.

## Quality

This adjusts the picture quality. Changing this setting can save on SD card space.

## Sharpness

This will change the sharpness of the image. Changing this setting will not affect the amount of space taken up by each picture.

## White Balance

It is recommended to leave this setting ON. However 4 modes are available for tailoring the lens to specific conditions. They are as follows: Daylight, Cloudy, Tungsten and Fluorescent.

## Color

Using this setting you are able to take pictures in Color, Black & White or Sepia.

## ISO

It is recommended to leave this setting on AUTO but 3 other options are available should you wish to change the sensitivity to light. They are 100, 200 & 400.

## Exposure

This can be used in combination with ISO to achieve certain results in different conditions.

## Anti-Shaking

This will turn on or off the built-in stability function (recommended to leave set to ON).

## Quick Review

OFF, 2 seconds, 5 seconds. This changes the length of time that an image is displayed on screen for review after a picture has been taken.

## Date Stamp

Turning this ON will place a date stamp on all images taken.



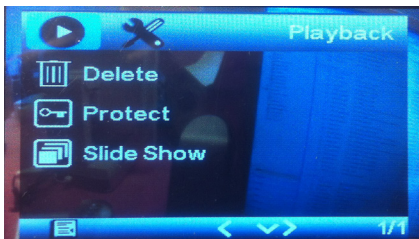
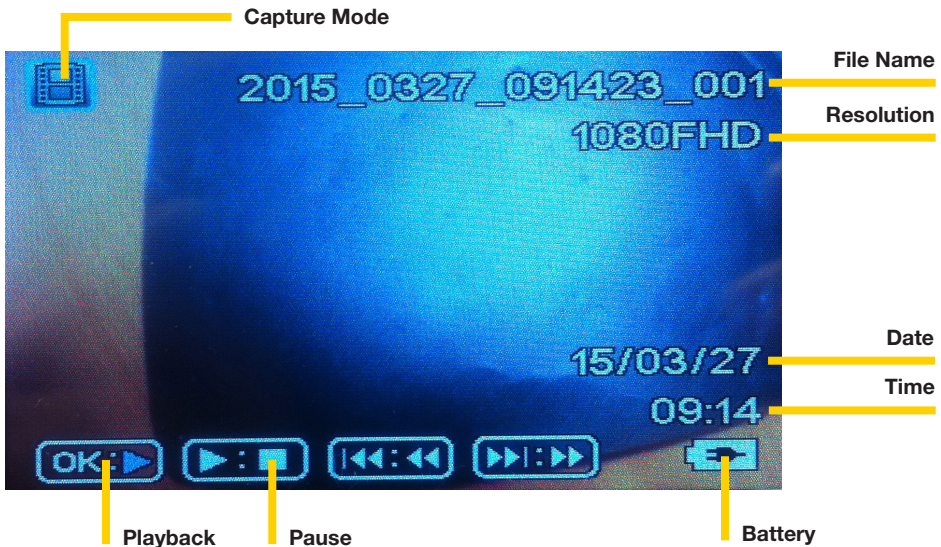
## DC-27

Dash Camera with 2.7" Display



## Playback Mode

When in playback mode you can use the UP and DOWN buttons to scroll through the stored images and videos. Press OK to play or display the selected content. Pressing the M button will enter the menu where the actions below can be completed.



### Delete

CURRENT will delete the selected file, ALL will delete all stored images and videos.

### Protect

This allows you to lock or unlock either the selected file or all files. When a file is locked it cannot be overwritten

### Slide Show

In this menu you are able to playback all stored images and videos in a sequence. The time setting adjusts the length of time that each image is displayed in the slide show.



## Settings Menu

Pressing the M button twice in any mode will take you to the device settings page where the following options are available.

### **Date/Time**

Allows you to set the current date and time.

### **Auto Power Off**

This allows the device to remain powered for a certain amount of time after power is removed. Selectable between 3, 5 or 10 minutes. You can also turn this feature off.

### **Beep Sound**

This will turn off the beep sound that is heard when scrolling through the menus.

### **Language**

Allows you to choose one of the following languages for the on screen displays and menus; English, French, Spanish, Portugese, German, Italian, Simple Chinese, Traditional Chinese, Russian, Japanese.

### **Frequency**

This adjusts the playback frequency when viewed on a Television or Monitor (50 or 60Hz).

### **Format**

Selecting this will format and erase all contents on the inserted SD card.

### **Default Setting**

This will reset all settings to the factory defaults.

### **Version**

This displays the current software version on the device.

# Installation Guide

## DC-27

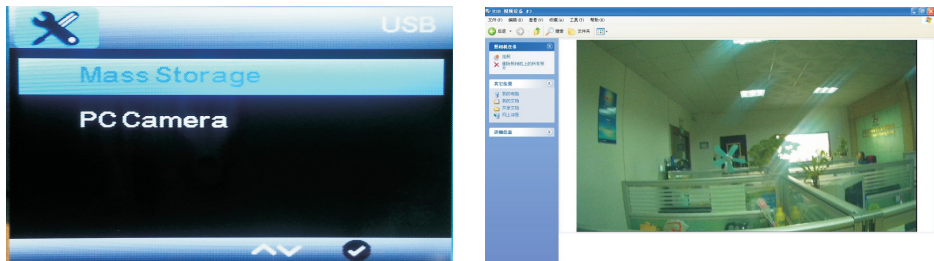
Dash Camera with 2.7" Display



## Sockets

### Mini USB Port

This can be used to connect the device to a PC when used as a webcam.  
The following menu will appear when connected this way.



- A. Mass storage: You will be able to read, copy and delete any of the stored files.
- B. PC camera: This will allow you to use the device as a webcam via your PC (compatible with Windows 2000 and newer).

### HDMI Output



This allows images and videos to be displayed on a TV with HDMI input.

(Please note: the HDMI cable is not supplied)



15500 Lightwave Drive, Suite 202, Clearwater, Florida 33760

email - [support@aampglobal.com](mailto:support@aampglobal.com) (US)  
tel - 1-800-477-2267

email - [technical.eu@aampglobal.com](mailto:technical.eu@aampglobal.com) (Europe)



EchoMaster is a Power Brand of AAMP Global.  
**EchoMaster.com**