

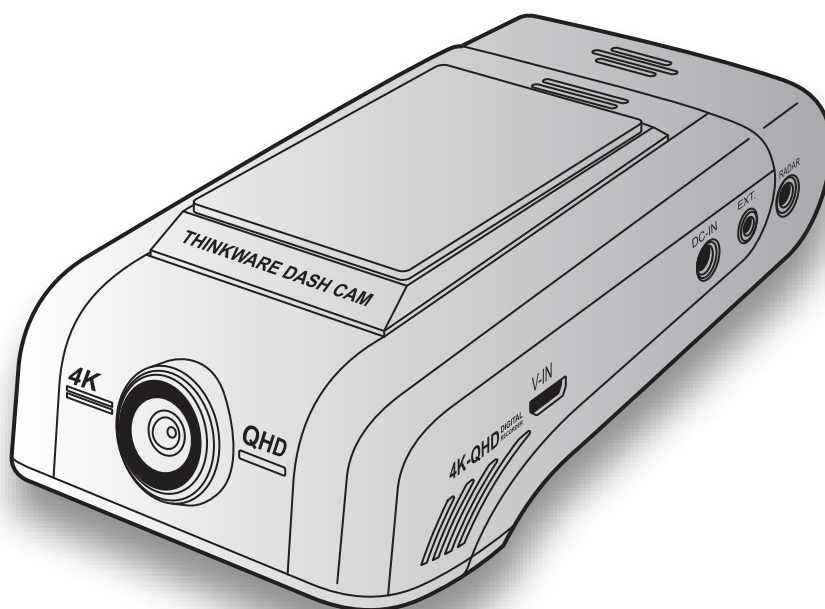
THINKWARE DASH CAM™

DC-U1-FG

User Guide

This product records videos while the vehicle is operating.

Read and follow the instructions in this guide to properly use and maintain the product.



Before using the product

About the product

This product records videos while the vehicle is operating. Use this product only for reference when investigating incidents or road accidents. This product is not guaranteed to record or process cloud data for all events. The product may not record accidents with impacts that are too minor to activate the impact sensor or accidents with massive impacts that cause the vehicle's battery voltage to deviate.

Video recording does not begin until the product is completely turned on (booted up). To ensure that all vehicle events are recorded, wait until the product is completely booted up after turning it on, and then begin operating the vehicle.

THINKWARE is not responsible for any loss caused by an accident, nor is it responsible for providing any support regarding the outcome of an accident.

Depending on the vehicle's configuration or operating conditions, such as the installation of remote door lock devices, ECU settings, or TPMS settings, some product features may not be supported, and different firmware versions may influence the product's performance or features.

About the user guide

The information provided in the guide may change when the manufacturer updates its service policy.

This user guide is intended for THINKWARE DC-U1-FG models only, and it may contain technical errors, editorial errors, or missing information.

Copyrights

All rights for the content and maps in this guide are reserved by THINKWARE and are protected under copyright laws. All unauthorized duplication, revision, publication, or distribution of this guide without written consent from THINKWARE is prohibited and is eligible for criminal charges.

Registered trademarks

THINKWARE DC-U1-FG is a registered trademark of THINKWARE.

Other product logos and service names in this guide are trademarks of the relevant companies.

FCC Statement

This device complies with Part 15 of the FCC Rules. Operation is subject to the following two conditions: (1) this device may not cause harmful interference, and (2) this device must accept any interference received, including interference that may cause undesired operation.

This equipment has been tested and found to comply with the limits for a Class B digital device, pursuant to Part 15 of the FCC Rules. These limits are designed to provide reasonable protection against harmful interference in a residential installation. This equipment generates, uses and can radiate radio frequency energy and, if not installed and used in accordance with the instructions, may cause harmful interference to radio communications. However, there is no guarantee that interference will not occur in a particular installation. If this equipment does cause harmful interference to radio or television reception, which can be determined by turning the equipment off and on, the user is encouraged to try to correct the interference by one or more of the following measures:

- Reorient or relocate the receiving antenna.
- Increase the separation between the equipment and receiver.
- Connect the equipment to an outlet on a circuit different from that to which the receiver is connected.
- Consult the dealer or an experienced radio/TV technician for help.
- This appliance and its antenna must not be co-located or operation in conjunction with any other antenna or transmitter.
- A minimum separation distance of 20cm must be maintained between the antenna and the person for this appliance to satisfy the RF exposure requirements.

FCC CAUTION: Any changes or modifications to the equipment not expressly approved by the party responsible for compliance could void your authority to operate the equipment.

FCC ID: 2ADTG-U1000

Information to user : RSS-247

This equipment complies with IC radiation exposure limits set forth for an uncontrolled environment. This equipment should be installed and operated with minimum distance 20 cm between the radiator & your body.

This device contains licence-exempt transmitter(s)/receiver(s) that comply with Innovation, Science and Economic Development Canada's licence-exempt RSS(s).

Please be cautioned the changes or modifications not expressly approved by the party responsible for compliance could void the user's authority to operate the equipment.

Notice: Operation is subject to the following two conditions : (1) this device may not cause interference, and (2) this device must accept any interference, including interference that may cause undesired operation of the device.

This Class B digital apparatus complies with Canadian ICES-003.

IC: 12594A-DC-U1000

Contents

Safety information	5	4.5.4 Using the strong impact notification while driving feature	31
1. Product overview	8	4.5.5 Using the impact notification while parked feature	31
1.1 Included items	8	4.5.6 Using the strong impact notification while parked feature	32
1.1.1 Standard items	8	4.5.7 Viewing strong Impact videos on the cloud service	33
1.2 Part names	9	5. Using the PC viewer	34
1.2.1 Front camera (main unit) - front view	9	5.1 System requirements	34
1.2.2 Front camera (main unit) - rear view	10	5.2 PC viewer for Windows	34
1.2.3 Rear camera	10	5.2.1 Installing the PC viewer (for Windows)	34
1.3 Removing and inserting the memory card	11	5.2.2 PC viewer screen layout (for Windows)	35
2. Installing the product	12	5.2.3 Playing recorded videos on the PC viewer (for Windows)	36
2.1 Installing the front camera (main unit)	12	5.2.4 PC viewer screen layout (for Mac)	37
2.1.1 Selecting an installation location	12	5.2.5 Playing recorded videos on the PC viewer (for Mac)	38
2.1.2 Securing the product	12	6. Settings	39
2.2 Installing the rear camera	14	6.1 Managing the memory card	39
2.2.1 Selecting an installation location	14	6.2 Setting the Camera	39
2.2.2 Securing the rear camera	15	6.3 Setting recording features	40
2.2.3 Connecting the rear camera cable	16	6.4 Setting road safety features	41
3. Using recording features	17	6.5 Configuring the system settings	41
3.1 Turning the product on or off	17	6.6 Configuring network function settings	42
3.2 Learning about file storage locations	17	7. Accessing the product information	43
3.3 Using the continuous recording feature	18	7.1 Viewing the product information	43
3.4 Recording manually	18	7.2 Accessing and configuring the GPS	43
3.5 Using parking mode	19	8. Upgrading the firmware	44
3.6 Using the Super Night Vision	21	9. Resetting the product	44
4. Using the mobile viewer	22	10. Troubleshooting	45
4.1 Connecting the product to a smartphone	22	11. Specifications	46
4.1.1 Connecting the product to a smartphone on Android 8 or earlier	22		
4.1.2 Connecting the product to a smartphone on Android 9 or later and on iOS	23		
4.2 Mobile viewer screen layout	25		
4.3 Playing recorded videos on the mobile viewer	26		
4.4 Video control menu overview	26		
4.5 Cloud service	27		
4.5.1 Log in to the THINKWARE account	27		
4.5.2 Locating the vehicle	28		
4.5.3 Setting Geo-Fence	29		

Safety information

Read the following safety information to properly use the product.

Safety symbols in this guide



"Warning" - Indicates a potential hazard which, if not avoided, may result in injury or death.



"Caution" - Indicates a potential hazard which, if not avoided, may result in minor injury or property damage.



"Note" - Provides useful information to help users better utilize the product's features.

Safety information for proper use

Driving and product operation



- **Do not operate the product while driving a vehicle.** Distraction while driving may cause accidents and result in injury or death.
- **Install the product in places where the driver's view is not obstructed.** Obstruction of the driver's vision may cause accidents and result in injury or death. Check with your state and municipal laws before mounting the product to the windshield.

Power supply



- **Do not operate or handle the power cable with wet hands.** Doing so may result in electrocution.
- **Do not use damaged power cables.** Doing so may result in electrical fire or electrocution.
- **Keep the power cable away from all heat sources.** Failure to do so may cause the power cord insulation to melt, resulting in electrical fire or electrocution.
- **Use the power cable with the correct connector and make sure the power cable is connected securely and is firmly in place.** Failure to do so may result in electrical fire or electrocution.
- **Do not modify or cut the power cable.** Also, do not place heavy objects on the power cable or pull, insert, or bend the power cable using excessive force. Doing so may result in electrical fire or electrocution.



- **Use only genuine accessories from THINKWARE or an authorized THINKWARE dealer.** THINKWARE does not guarantee compatibility and normal operation of third-party accessories.
- **When connecting the power cable to the product, ensure that the connection between the cable plug and the power cable connector on the product is secure.** If the connection is loose, the power cable may become disconnected due to vehicle vibration. Video recording is not available if the power connector is disconnected.

Children and pets



- **Ensure that the product is out of the reach of children and pets.** If the product breaks, it may result in fatal damage.

Other information about the product

Product management and operation



- **Do not expose the product to direct sunlight or intense light.** The lens or internal circuitry may fail otherwise.
- **Use the product at a temperature between 14°F and 140°F (-10°C to 60°C) and store the product at a temperature between -4°F and 158°F (-20°C to 70°C).** The product may not function as designed and some permanent physical damages may result if it is operated or stored out of the specified temperature ranges. Such damages are not covered by the warranty.
- **Frequently check the product for the proper installation position.** Impact caused by extreme road conditions may alter the installation position. Ensure that the product is positioned as instructed in this guide.
- **Do not apply excessive force when pressing the buttons.** Doing so may damage the buttons.
- **Do not use chemical cleaners or solvents to clean the product.** Doing so may damage plastic components of the product. Clean the product using a clean, soft, and dry fabric.
- **Do not disassemble the product or subject the product to impact.** Doing so may damage the product. Unauthorized disassembly of the product voids the product warranty.
- **Handle with care.** If you drop, mishandle, or expose the product to external shocks, it may cause damage and/or result in the malfunction of the product.
- **Do not attempt to insert foreign objects into the product.**
- **Avoid excessive humidity and do not allow any water to enter the product.** Electronic components inside the product may fail if exposed to humidity or water.



- Depending on the make and model of your car, the power may be constantly supplied to the dash cam even when the ignition is turned off. Installation of the product to a continuously powered 12V outlet could result in vehicle battery drainage.
- This product is designed to record video while the vehicle is in operation. The quality of the video might be affected by weather conditions and the road environment, such as whether it is day or night, presence of street lighting, entering/exiting tunnels, and the surrounding temperature.
- THINKWARE is NOT responsible for the loss of any recorded video during operation.
- Although the product was designed to withstand high-impact car collisions, THINKWARE does not guarantee the recording of accidents when the product is damaged as a result of the accident.
- Keep the windshield and camera lens clean for optimal video quality. Particles and substances on the camera lens or windshield may reduce the quality of the recorded videos.
- This product is intended to be used inside the vehicle only.

1. Product overview

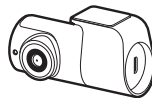
1.1 Included items

Ensure that all the items are included when you open the product box.

1.1.1 Standard items



Front camera (main unit)



Rear camera



Mount



Adhesive cable holder



MicroSD memory card
with adapter
(consumable)



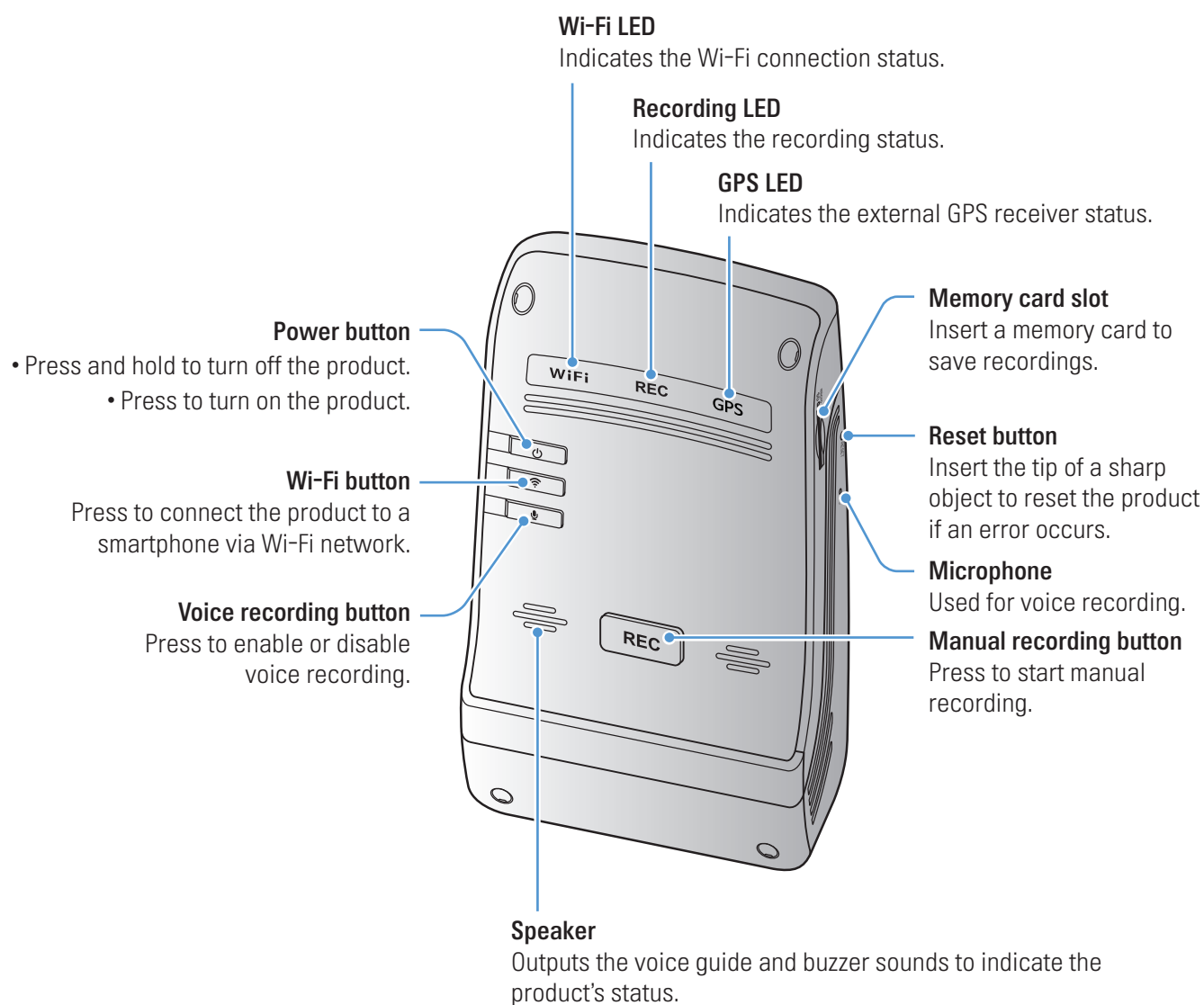
Quick start guide & Warranty
/ CS information / User guide
(stored in the microSD card)



The standard items may change without prior notice.

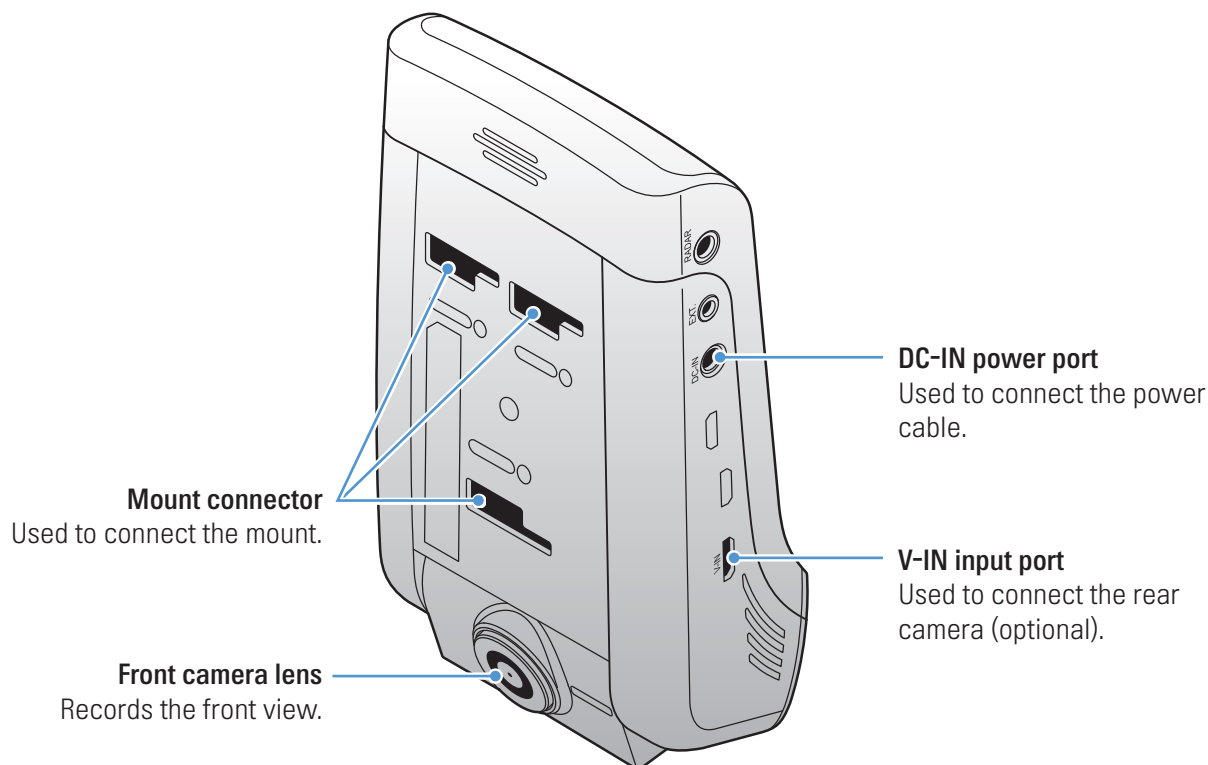
1.2 Part names

1.2.1 Front camera (main unit) - front view

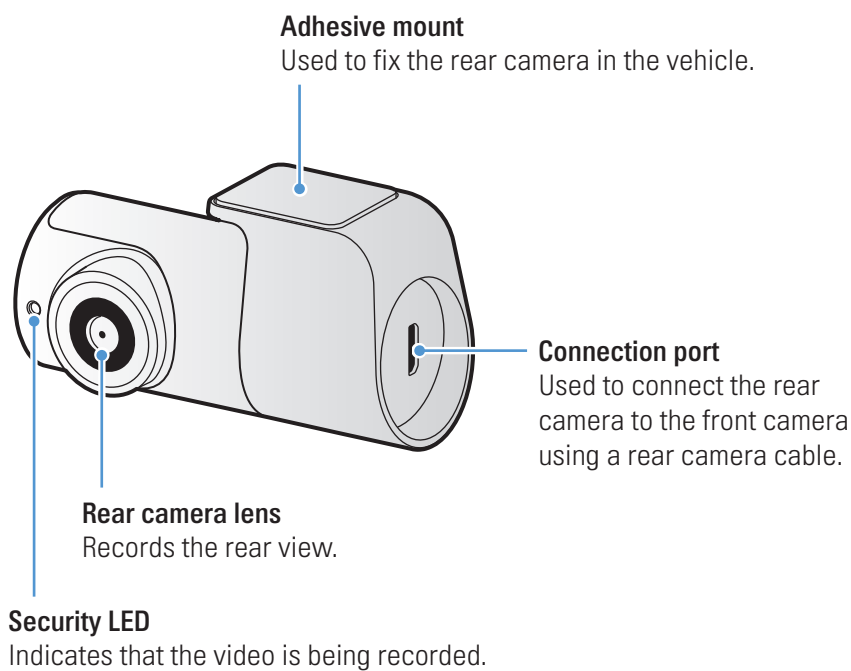


To reset the product, press and hold the voice recording (🎤) and manual recording (REC) buttons simultaneously until you hear beeps.

1.2.2 Front camera (main unit) - rear view

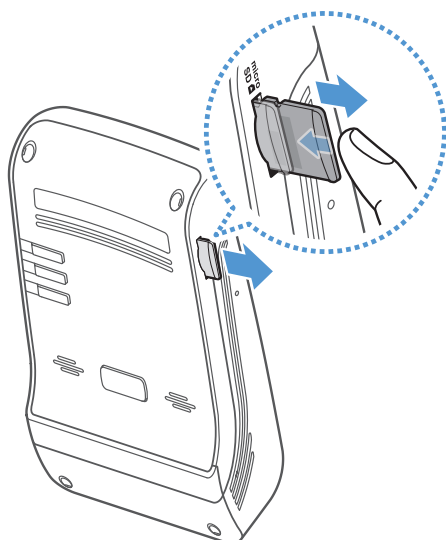


1.2.3 Rear camera



1.3 Removing and inserting the memory card

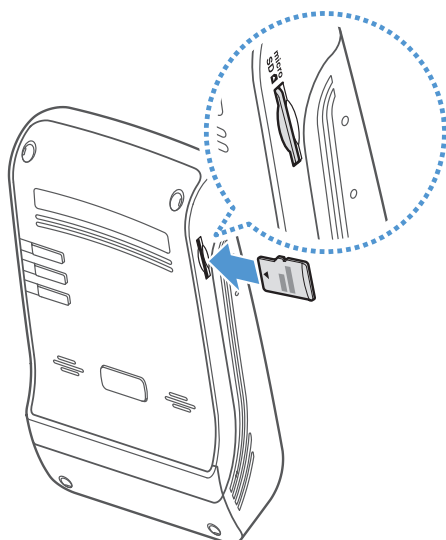
Follow the instructions to remove the memory card from the product or to insert the memory card into the product.



Removing the memory card

Ensure that the product is turned off, and then gently push the bottom of the memory card with your fingernail. The lower part of the memory card will be exposed.

Remove it from the product.



Inserting the memory card

Insert the memory card into the memory card slot and push it into the slot until you hear a click.

Before inserting the memory card, ensure that the metal contacts on the memory card are facing toward the mount connector of the product.



- Ensure that the product is turned off before removing the memory card. The recorded video files may be corrupted or lost if you remove the memory card while the product is on.
- Ensure that the memory card is in the correct direction before inserting it into the product. The memory card slot or the memory card may be damaged if it is inserted incorrectly.
- Use only authentic memory cards from THINKWARE. THINKWARE does not guarantee compatibility and normal operation of third-party memory cards.



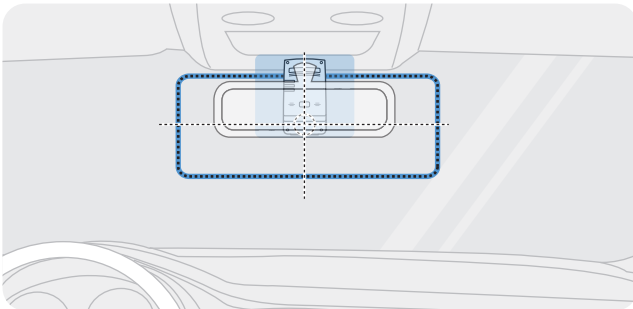
To prevent loss of recorded video files, periodically back up the video files on a separate storage device.

2. Installing the product

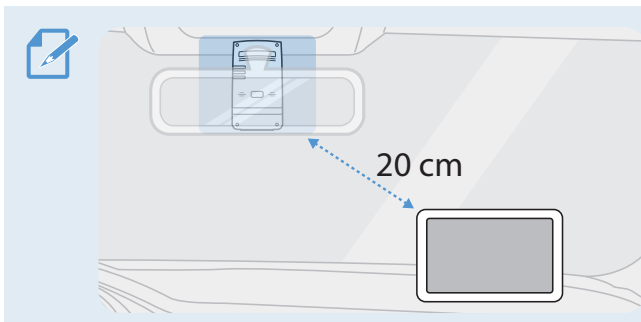
2.1 Installing the front camera (main unit)

Follow the instructions to properly install the product.

2.1.1 Selecting an installation location



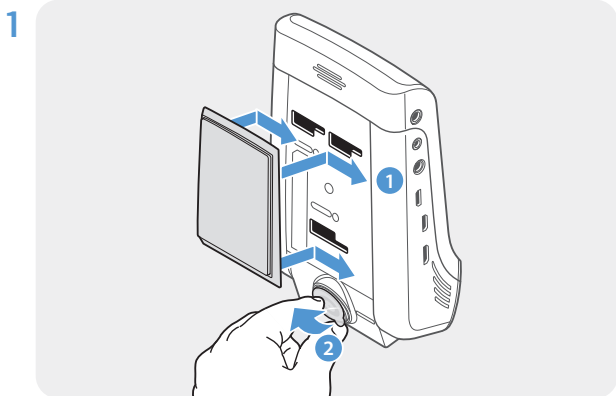
Select an installation location that can record the entire view in front of the vehicle without obstructing the driver's vision. Ensure that the front camera lens is located in the center of the windshield.



If a GPS navigation device is installed on the dashboard, its GPS reception may be affected depending on the dashboard camera's installation location. Adjust the installation location of the GPS navigation device to ensure that the two devices are separated by at least 20 centimeters (approximately 8 inches).

2.1.2 Securing the product

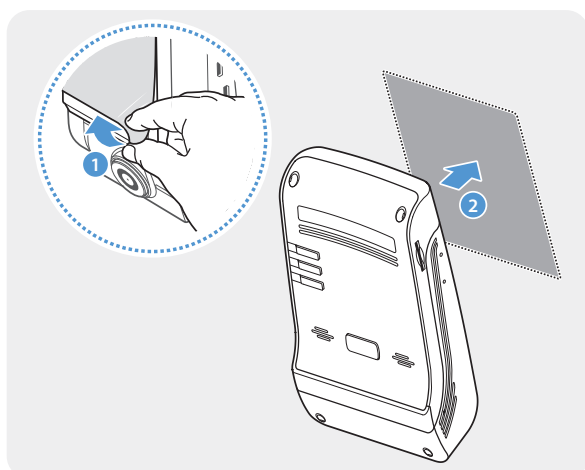
Follow the instructions to secure the product at the installation location.



Align the mount to the mount rail on the product, and then slide it until you hear a click (1). Then, carefully remove the protective film (2).

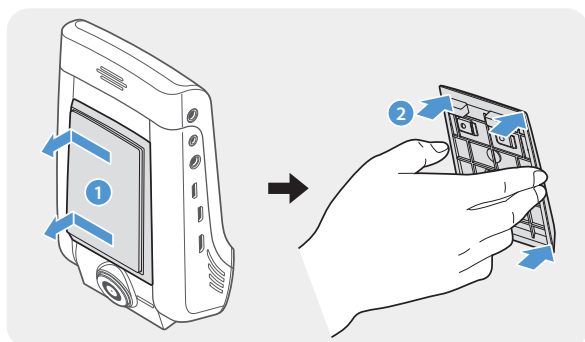
- 2 After determining the installation location, wipe the installation location on the windshield with a dry cloth.

3



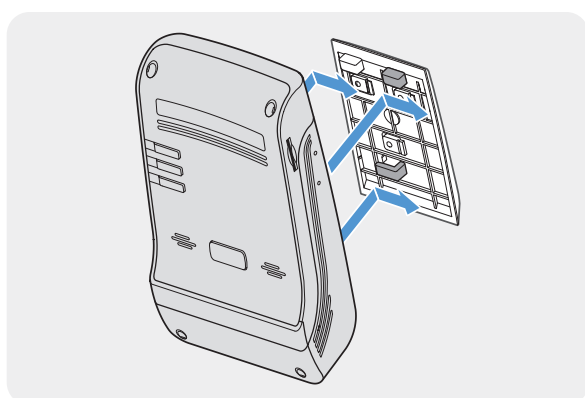
Remove the protective film from the adhesive mount, and then press the mount to the installation location.

4



Remove the product from the mount and push the mount against the windshield to ensure that the mount is firmly fixed.

5

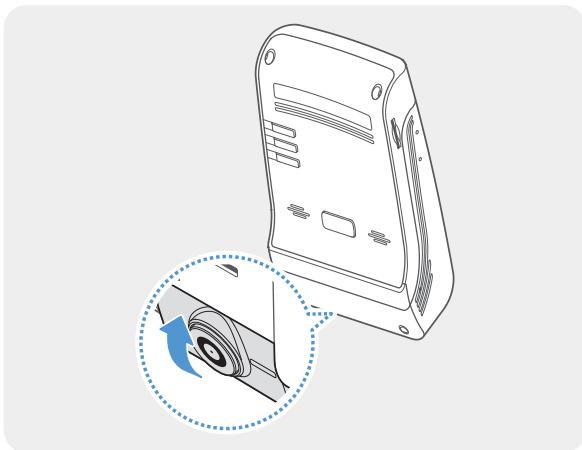


Align the product to the mount, and then slide it into the locking position until you hear a click.



- The product may fall and be damaged during vehicle operation if it is not firmly fixed to the mount.
- If you need to remove the mount from the windshield to alter the installation location, be careful not to damage the windshield's film coat.

6



Set the vertical angle of the camera appropriately.

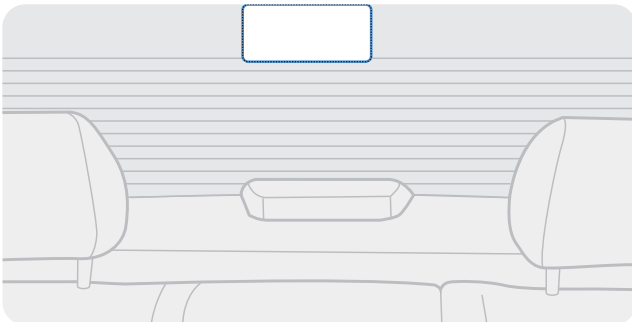


To confirm the camera angle, record a video after installation and check the video using the mobile viewer or the PC viewer. If necessary, adjust the camera angle again.
For more information about the mobile viewer or the PC viewer, refer to "4. Using the mobile viewer" on page 22 or "5. Using the PC viewer" on page 34.

2.2 Installing the rear camera

Refer to the following instructions to properly install the rear camera.

2.2.1 Selecting an installation location



Select a location on the rear windshield where there is no defrost grid wire and the camera can record the entire rear view.



- For vehicles with a sunshade attached to the rear windshield, you must select a location where using the sunshade will not interfere with camera operation.
- The adhesive part of the rear camera should not touch the defrost grid.

2.2.2 Securing the rear camera

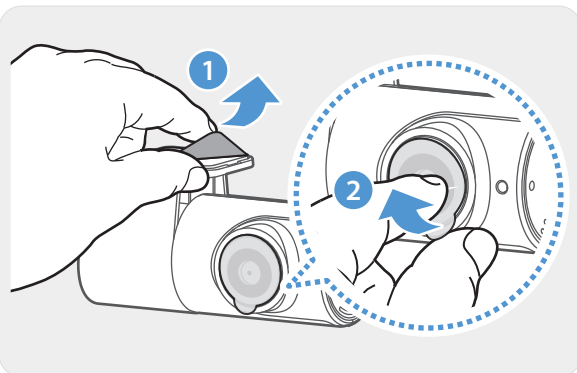
Refer to the following instructions to secure the product to the installation location.

- 1 After determining the installation location, wipe the installation surface of the windshield with a dry cloth.



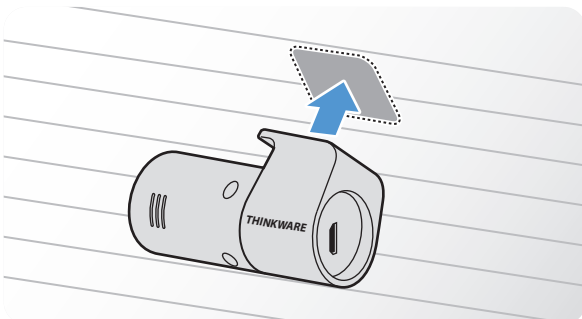
Check the installation location before you secure the rear camera to the rear windshield. After securing the rear camera to the windshield, it is hard to remove the camera or change the installation location due to the strong adhesive.

2



Remove the protective film from the adhesive mount and camera lens.

3

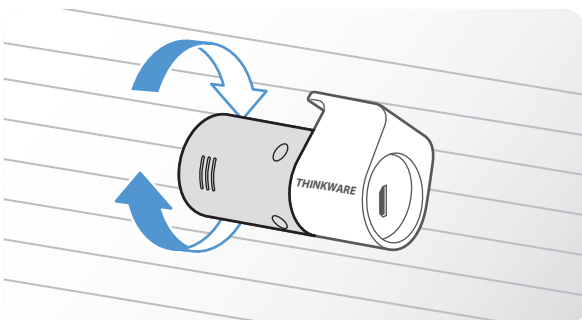


Attach the product with the THINKWARE logo facing indoors and press the adhesive tape firmly to secure the camera.



If the product is fixed in reverse, the rear view will be recorded upside down.

4

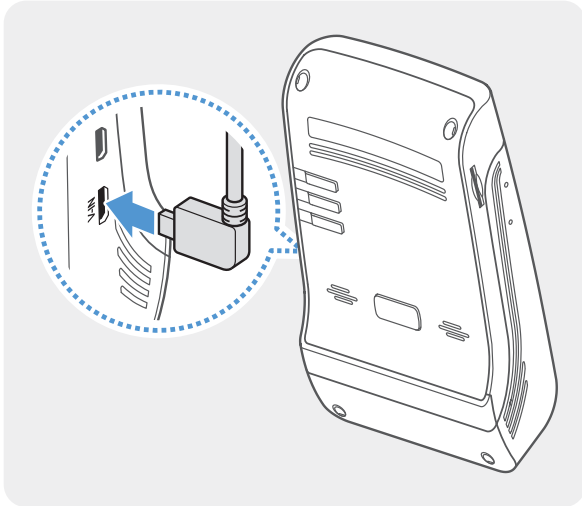


Adjust the camera's vertical angle.

2.2.3 Connecting the rear camera cable

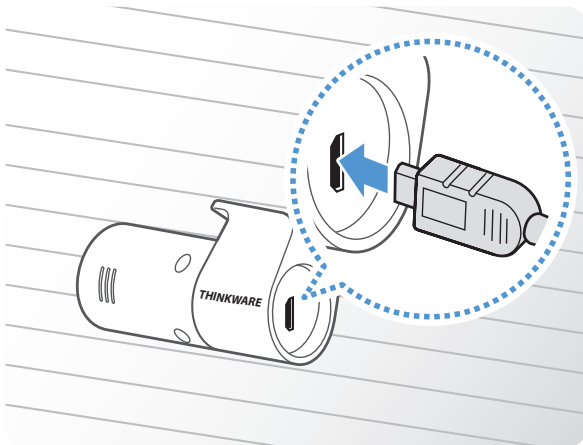
Power off the product and connect the rear camera cable to the front camera (main unit).

1



Connect one end of the rear camera cable to the front camera's V-IN port.

2



Connect the other end of the rear camera cable to the rear camera's connection port.



For safe driving, arrange the cables to prevent the driver's vision from being obstructed or interfering with driving.

- 3 Turn on the ACC or start the engine to check if the product is powered on. After the product is powered on the voice guidance will be turned on.



The product is powered on when the ACC mode is turned on or when the engine starts.

3. Using recording features

3.1 Turning the product on or off

The product is turned on automatically and continuous recording starts when you turn on the ACC or start the engine.



Wait until the product is completely booted up after turning it on, and then begin operating the vehicle. The video recording does not begin until the product is completely turned on (booted up).

3.2 Learning about file storage locations

Videos are stored in the following folders according to their recording mode.

On the mobile viewer	Continuous	Continuous Incident	Manual Recording	Motion Detection	Parking Incident
In the memory card	cont_rec	evt_rec	manual_rec	motion_ timelapse_rec	parking_rec



Play videos on Window/Mac computer or using the Thinkware mobile app. If you play videos by inserting the memory card in devices such as a smartphone or a tablet PC, the video files may be lost.



A file name is composed of the recording start date and time, and the recording option.

YYYY_MM_DD	HH_MM_SS	
REC_2022_07_01	10_25_30	F
REC_2022_07_01	10_25_30	R



Recording conditions

- F: Front camera
- R: Rear camera (when optional rear camera is equipped)

3.3 Using the continuous recording feature

Connect the power cable to the product's DC-IN power port and then turn on the vehicle's electrical accessories or start the engine. The recording LED(**REC**) and the voice guide are turned on, and the continuous recording starts.

During continuous recording, the product operates as follows.

Mode	Operation description	Recording LED (REC)
Continuous recording	During driving, videos are recorded in 1 minute segments and stored in the " cont_rec " folder.	 (light on)
Incident continuous recording*	When an impact to the vehicle is detected, a video is recorded for 20 seconds, from 10 seconds before the detection to 10 seconds after the detection, and stored in the " evt_rec " folder.	 (flickers)

* When an impact to the vehicle is detected during continuous recording, incident continuous recording starts with a double beep sound.




- Wait until the product is completely booted up after turning it on, and then begin operating the vehicle. The video recording does not begin until the product is completely turned on (booted up).
- When incident continuous recording starts, a double "beep" sounds as a notification. This function saves you time when checking the recording LED(**REC**) to know the operating status of the product.
- To enable recording, you must insert a memory card into the product.

3.4 Recording manually

You can record a scene you want to capture while driving and store it as a separate file.

To start manual recording, press the manual recording (**REC**) button. Then, manual recording will start with the voice guide. During manual recording, the product operates as follows.

Mode	Operation description	Recording LED (REC)
Manual recording	When you press the manual recording (REC) button, a video will be recorded for 1 minute, from 10 seconds before to 50 seconds after pressing the button, and stored in the " manual_rec " folder.	 (flickers)

3.5 Using parking mode






When the product is connected to the vehicle via the hardwiring cable (optional), the operating mode is switched to parking mode with the voice guide after the engine or electrical accessories are turned off.





- Parking mode operates only when the hardwiring cable is connected. The hardwiring cable (optional) must be professionally installed to the vehicle by a trained mechanic.
- To use all recording modes, you must insert a memory card into the product.
- Depending on the battery charging status of the vehicle, the duration of parking mode may differ. If you want to use parking mode for an extended period, check the battery level to prevent battery depletion.

If you do not want to use parking mode or you want to change the mode settings, from the mobile viewer, tap **Dash Cam Settings > Record Settings**.

Refer to the following table to set the **Parking Mode** options.

Option		Operation description	Recording LED (REC)
Motion Detection	No motion or impact detected	Monitors movement in the area or impacts to the vehicle. Video will be recorded only when motion or an impact is detected.	 (flickers slowly)
	Motion detected	When a moving objects is detected while parking, a video is recorded for 20 seconds, from 10 seconds before detection to 10 seconds after detection, and stored in the " motion_timelapse_rec " folder.	 (flickers quickly)
	Impact detected	When an impact is detected while parking, a video is recorded for 20 seconds, from the moment 10 seconds before detection to 10 seconds after detection, and stored in the " parking_rec " folder.	 (flickers quickly)
Time Lapse	No impact detected	A videos is recorded at a rate of 2 fps for 10 minutes, compressed into a 2-minute long file, and stored in the " motion_timelapse_rec " folder. Since the video file recorded with this option is small, you can record a long video.	 (light on)
	Impact detected	When an impact is detected while parking, a video is recorded for 100 seconds at a rate of 2 fps, from the moment 50 seconds before detection to 50 seconds after detection, and stored in the " parking_rec " folder after being compressed into a 20-second long file. (The buzzer will sound.)	 (flickers quickly)

Option		Operation description	Recording LED (REC)
Energy Saving	No impact detected	Monitors impacts to the vehicle. Video will be recorded only when an impact is detected.	Off
	Impact detected	<p>When an impact is detected while parking, a video is recorded for 20 seconds from within 1 second after detection and stored in the "parking_rec" folder.</p> <div>  <ul style="list-style-type: none"> • When the RADAR module (optional) detects an object in the radar area, Energy Saving is switched off and the impact detection is set for 30 seconds. (If there is no impact detected, the product does not store the recording and switches back to Energy Saving.) • If an object and impact are detected in the radar area, a video is recorded for 20 seconds and stored in the "parking_rec" folder. (The buzzer will sound.) When the recording ends, the product switches back to Energy Saving. </div>	 (flickers quickly)
OFF		The product is powered off when electric accessories and the engine are turned off.	Off



If parking mode settings are changed, the videos recorded with the previous settings will be deleted. To prevent data loss, back up all parking mode videos before changing parking mode settings.



You cannot use Motion Detection, Time Lapse, or Energy Saving at the same time.

3.6 Using the Super Night Vision

With the Super Night Vision feature, you can record videos that are much brighter than videos recorded without this feature. This feature is enabled by real-time image signal processing (ISP) to improve the brightness of videos recorded while driving or parked at night.



〈When Super Night Vision is deactivated〉



〈When Super Night Vision is activated〉

- 1 From the mobile viewer, tap **Dash Cam Settings > Record Settings**.
- 2 From **Super Night Vision**, select the desired recording mode to use the Super Night Vision feature. The new setting is applied automatically.

4. Using the mobile viewer

You can view and manage recorded videos and configure various product features on your smartphone.



One of the following environments is required to use the **THINKWARE CLOUD** application:

- Android 4.4 (KitKat) or later
- iOS 8.0 or later

4.1 Connecting the product to a smartphone

4.1.1 Connecting the product to a smartphone on Android 8 or earlier

- 1 On your smartphone, open the Google Play Store download, and install **THINKWARE CLOUD**.
- 2 Open the **THINKWARE CLOUD** application.
- 3 Tap **Dash cam connection is required.** at the bottom of the screen and follow the on-screen instructions to connect the product to your smartphone.




The Wi-Fi password is required when you connect the product to a smartphone for the first time. Enter “**123456789**” in the password input field.

4.1.2 Connecting the product to a smartphone on Android 9 or later and on iOS


Before connecting the product to your smartphone,

- on an Android smartphone, open the Google Play Store, download and install **THINKWARE CLOUD** application.
- on an iOS smartphone, open the Apple App Store, download and install **THINKWARE CLOUD** application.

Connecting via Wi-Fi

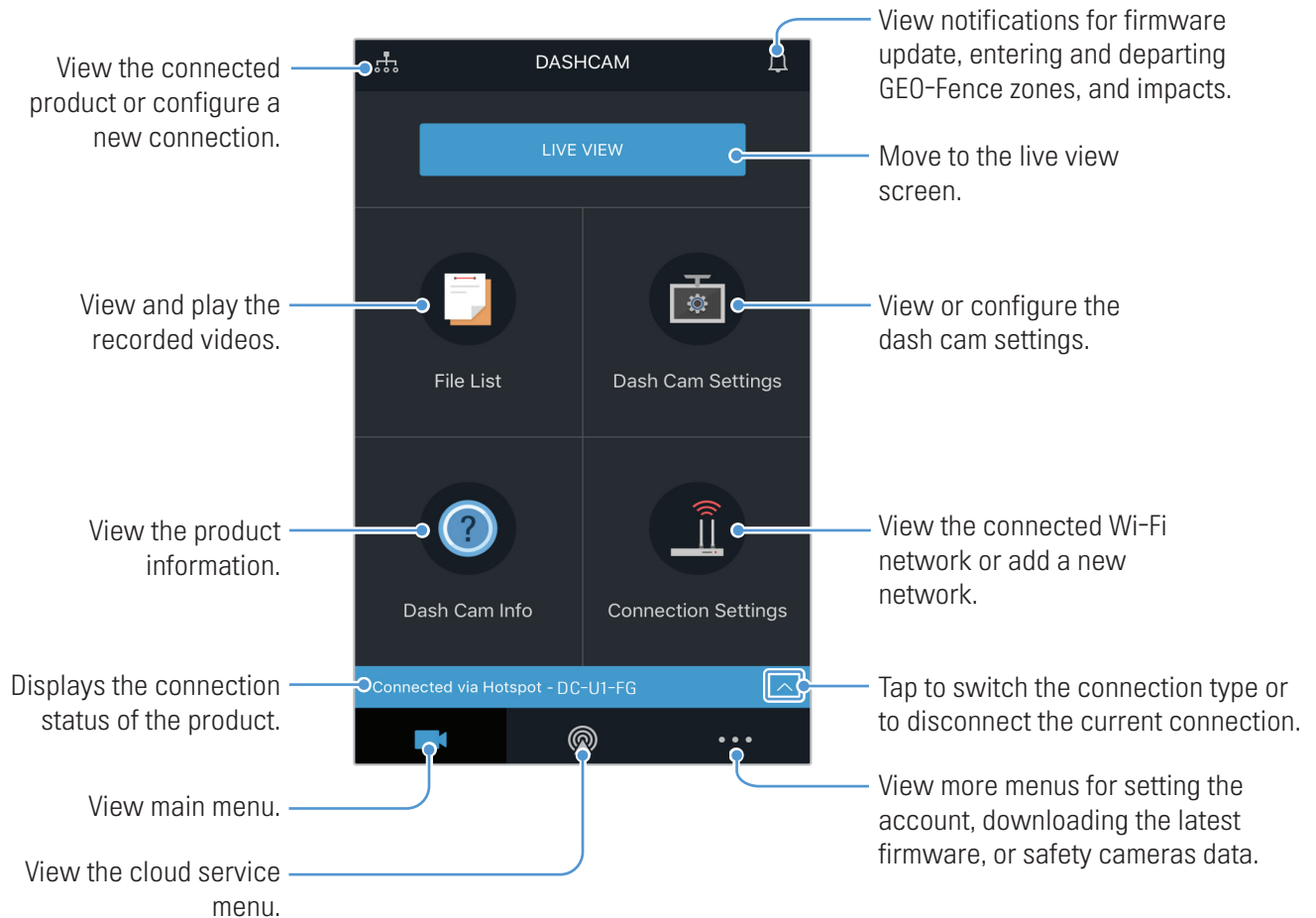
- 1 On your smartphone, open the **THINKWARE CLOUD** application.
- 2 At the bottom of the screen, tap **Dash cam connection is required**.
- 3 Select a dash cam model to connect to your smartphone.
- 4 Tap **Connect** in the Wi-Fi connection area at the top of the screen, and on the Wi-Fi activating screen, tap **Next**.
- 5 Press the Wi-Fi () button on the product. And then,
 - on an Android smartphone, go to **Connections > Wi-Fi**.
 - on an iOS smartphone, go to **Settings > Wi-Fi**.
- 6 From the network list, select the Wi-Fi network starting with “**Thinkware**” and enter “**123456789**” in the password field. For security purposes, change the Wi-Fi password after connecting to the Wi-Fi network.
- 7 Return to the **THINKWARE CLOUD** application and check **Connected via Wi-Fi – dash cam model name** at the bottom of the main screen. The product is now connected to the application.

Connecting via hotspot

- 1 On your smartphone, open the **THINKWARE CLOUD** application.
- 2 At the bottom of the screen, tap **Dash cam connection is required**.
- 3 Select a dash cam model to connect to your smartphone.
- 4 Tap **Connect** in the hotspot connection area at the bottom of the screen, and tap **Yes, it is**, when it asks if it is the first time to connect.
- 5 Tap **Next** on the Wi-Fi activating screen, and press the Wi-Fi () button on the product. And then,
 - on an Android smartphone, go to **Connections > Wi-Fi**.
 - on an iOS smartphone, go to **Settings > Wi-Fi**.
- 6 From the network list, select the Wi-Fi network starting with “**Thinkware**” and enter “**123456789**” in the password field. For security purposes, change the Wi-Fi password after connecting to the Wi-Fi network.
- 7 Return to the **THINKWARE CLOUD** application, enter your Mobile or Personal Hotspot SSID and password, and tap **Input Complete**.
- 8
 - On an Android smartphone, go to **Connections > Mobile Hotspot and Tethering > Mobile Hotspot** and tap **ON** to turn on the Mobile Hotspot.
 - On an iOS smartphone, go to **Settings > Personal Hotspot** and turn on the Personal Hotspot.
- 9 Wait until the product is connected to your smartphone. You will hear the product say, “**Connected to the Internet.**” when the product is connected to your smartphone. You can also see **Connected via hotspot – dash cam model name** at the bottom of the main screen on the **THINKWARE CLOUD** application.

4.2 Mobile viewer screen layout

The following provides brief information about the mobile viewer's screen layout.



4.3 Playing recorded videos on the mobile viewer

Follow the instructions to play recorded videos.



The recording and the Advanced Driver Assistance System (ADAS) features of the product are disabled while checking the video file list or playing a video on the mobile viewer.

- 1 On your smartphone, open the **THINKWARE CLOUD** application and connect the product to your smartphone.
- 2 From the home screen of the mobile viewer, tap **File List**. The categories will be displayed.
- 3 Tap the desired category. The video file list will appear.
- 4 If necessary, tap **All**, **Front**, or **Rear** to filter the video file list by camera.
- 5 Select the desired video file to play.

4.4 Video control menu overview

The following provides brief information about the mobile viewer's video control menu.



The recording and the Advanced Driver Assistance System (ADAS) features of the product are disabled while checking the video file list or playing a video on the mobile viewer.

Move to the file list screen.

Displays the playback status.



Play the previous file.

Play the next file.

Play or pause the video.

4.5 Cloud service

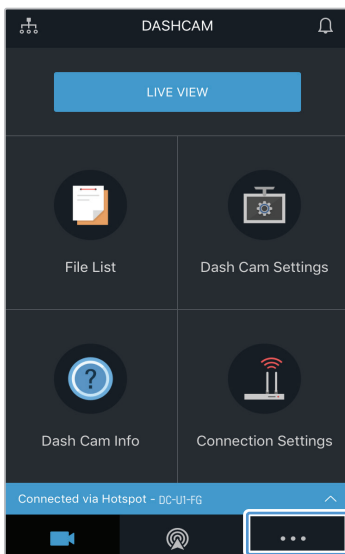
As long as the dash cam is connected to Internet, you can view your vehicle's location, receive notifications when entering and departing Geo-Fence zones, and detecting a strong impact.

4.5.1 Log in to the THINKWARE account

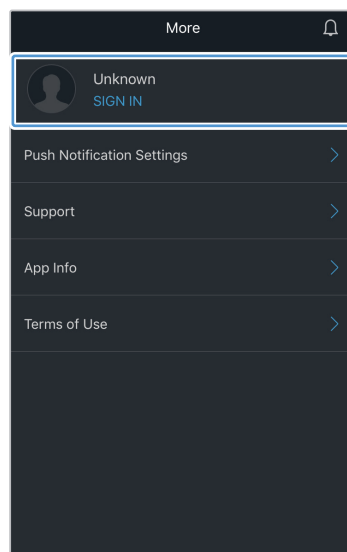
Follow the instructions to log in to the THINKWARE account.



- To use the cloud service, log in to the THINKWARE account. If you do not have an ID, select **ThinkWare Sign Up** on the bottom of **SIGN IN** page, and create an account.
- Once you log in to the THINKWARE account and register your product to your account, you can use cloud service even if your product is connected to Internet via Wi-Fi or others' smartphone.
- The cloud service is only available when the mobile viewer's network function is turned on. To properly use the cloud service, go to **Dash Cam Settings > Network Function Settings** and enable **Network Function**.
- The impact notification features are only available when the mobile viewer's network function is turned on. To use the notification features, go to **Dash Cam Settings > Network Function Settings** and enable **Network Function**.



Tap .



Tap **SIGN IN**.

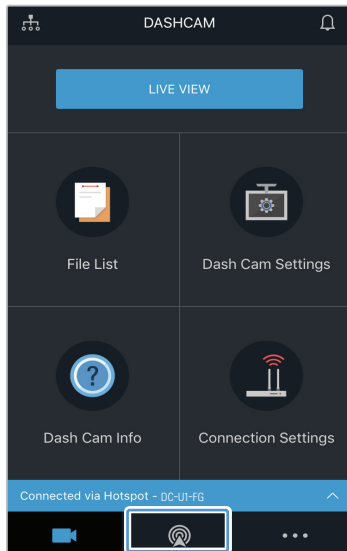


1 Enter your ID and the password.

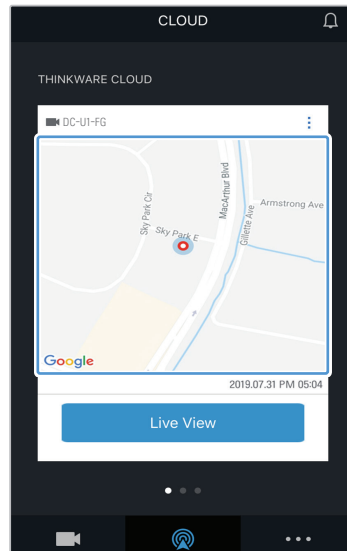
2 Tap **SIGN IN**.

4.5.2 Locating the vehicle

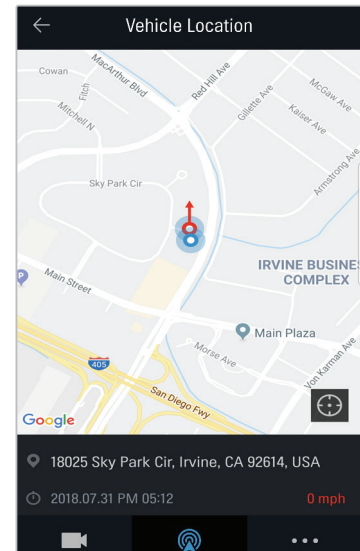
The cloud service receives your vehicle's location information from your product and displays it on the mobile viewer. Follow the instructions to locate your vehicle.



Tap .



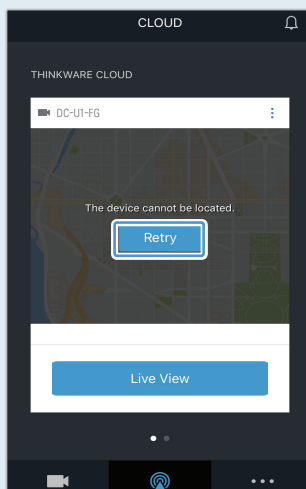
Your smartphone location is marked on the map.
Tap the map to confirm your vehicle's location on the map.



Your vehicle's location and direction are marked on the map.
The last information reception date and time are also displayed.



If the cloud service failed to receive your vehicle's location information from the product or if you are using the cloud service for the first time, the following screen will appear. Tap **Retry** to search for the vehicle's location information again.

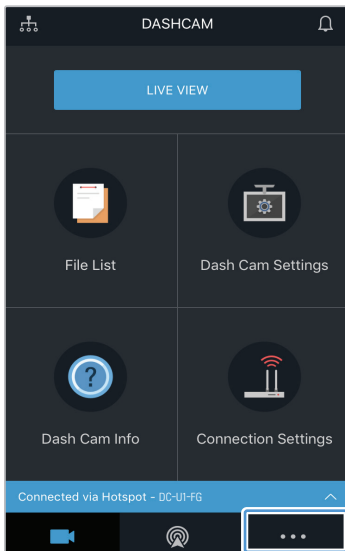


4.5.3 Setting Geo-Fence

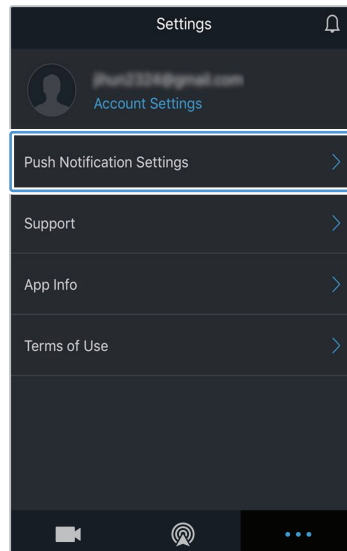
You can receive notifications when your vehicle enters to or departs from the Geo-Fence zones.

Turning on the Geo-Fence notification

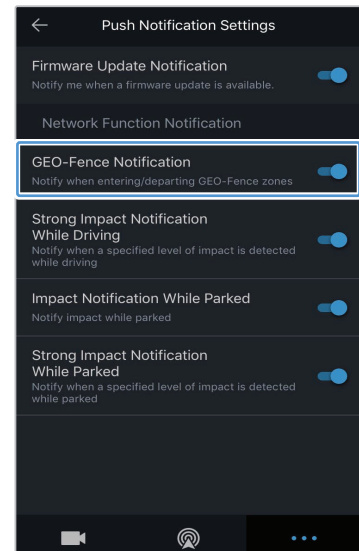
Follow the instructions to turn on the Geo-Fence notification.



Tap .



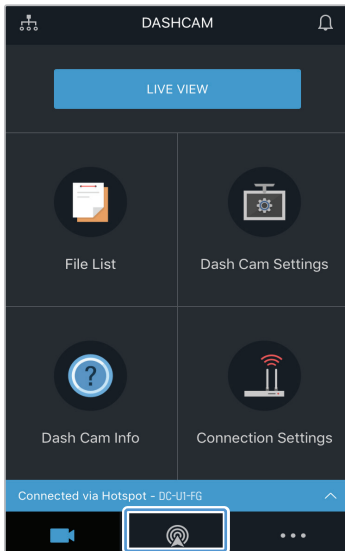
Tap **Push Notification Settings**.



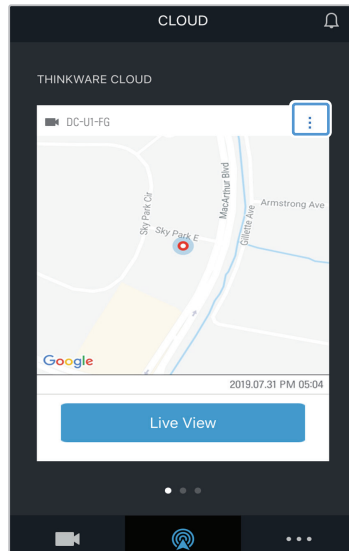
Tap **GEO-Fence Notification**.

Adding a Geo-Fence zone

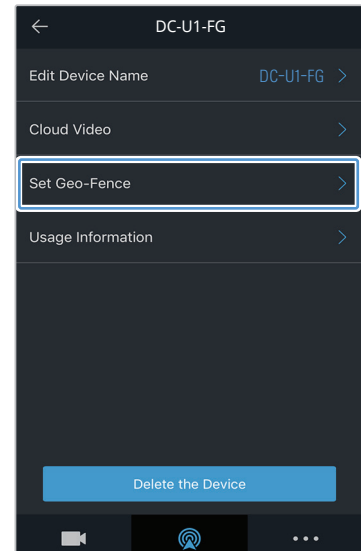
Follow the instructions to add a Geo-Fence zone.



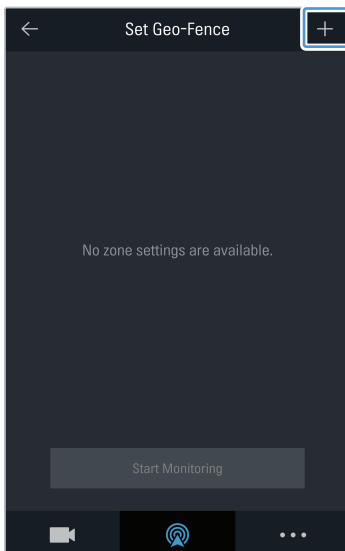
Tap .



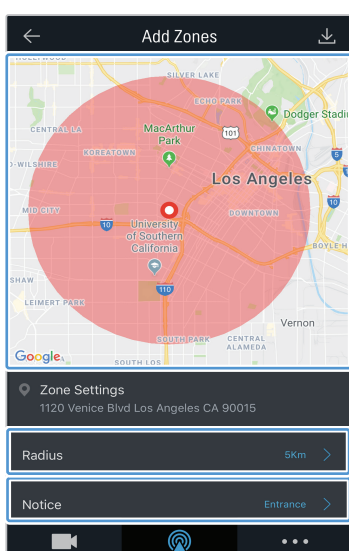
Tap .



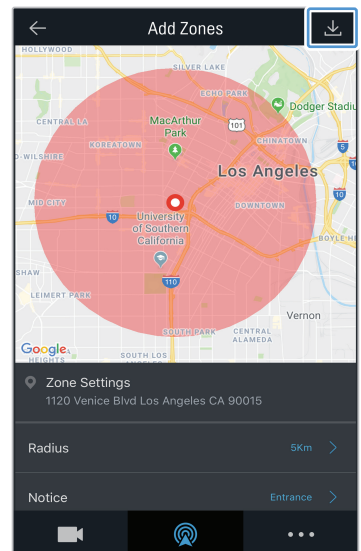
Tap **Set Geo-Fence**.



Tap **+**.



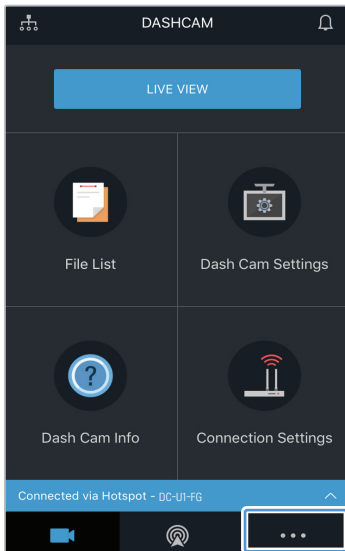
- 1 Tap the desired location on the map.
- 2 Tap **Radius** and select a distance.
- 3 Tap **Notice** and select when to receive notifications.



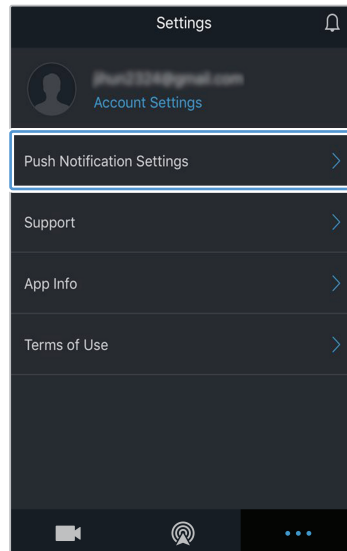
Tap .

4.5.4 Using the strong impact notification while driving feature

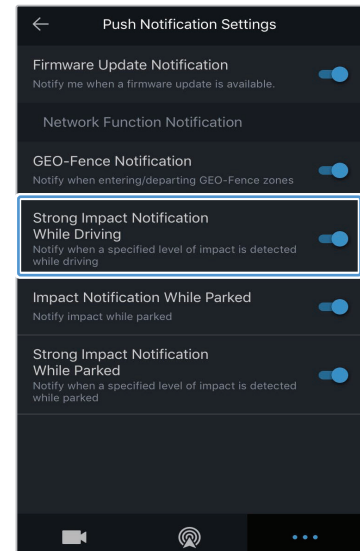
You can receive notifications if any strong impacts occur to the vehicle while driving. Follow the instruction to turn on the strong driving impact notification.



Tap .



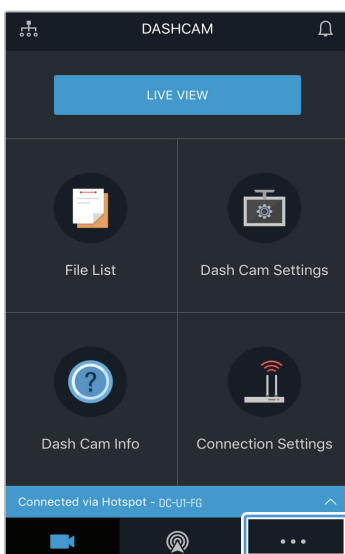
Tap Push Notification Settings.



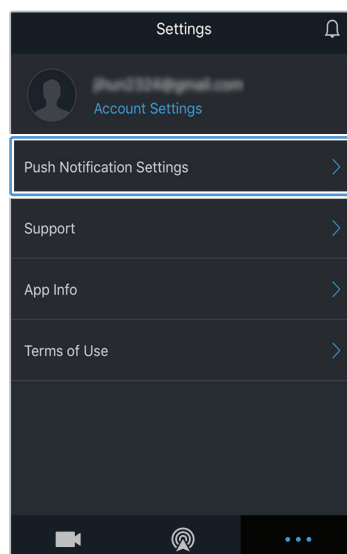
Tap Strong Impact Notification While Driving.

4.5.5 Using the impact notification while parked feature

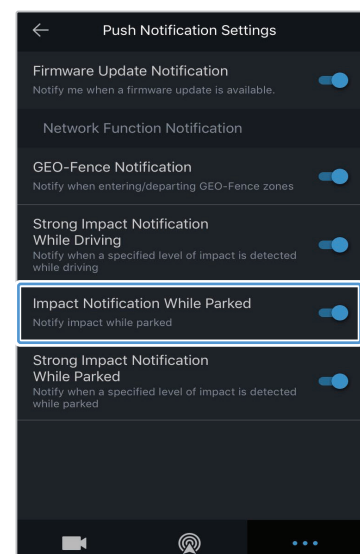
You can receive notifications if any impacts occur while the vehicle is parked. Follow the instructions to turn on the impact notification while the vehicle is parked.



Tap .



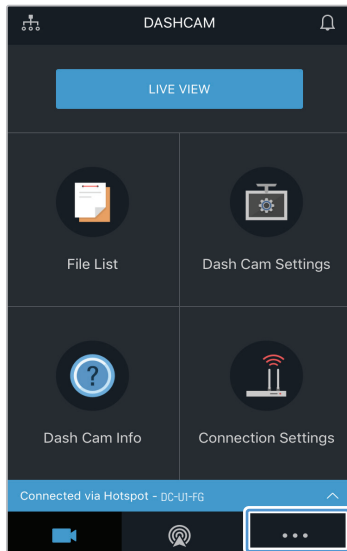
Tap Push Notification Settings.



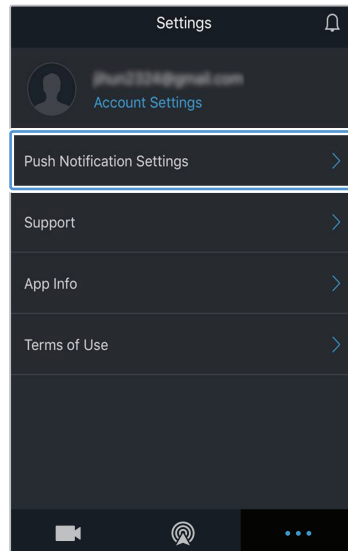
Tap Impact Notification While Parked.

4.5.6 Using the strong impact notification while parked feature

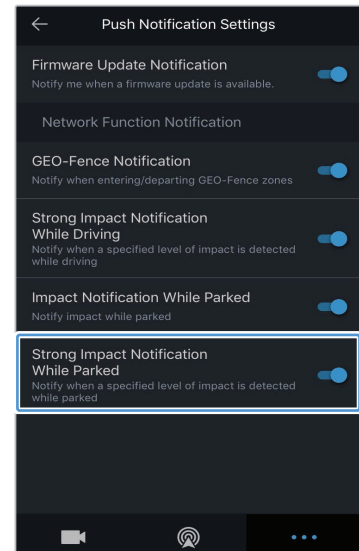
You can receive notifications if any specified level of impacts occur while the vehicle is parked. Follow the instructions to turn on the strong impact notification while the vehicle is parked.



Tap .



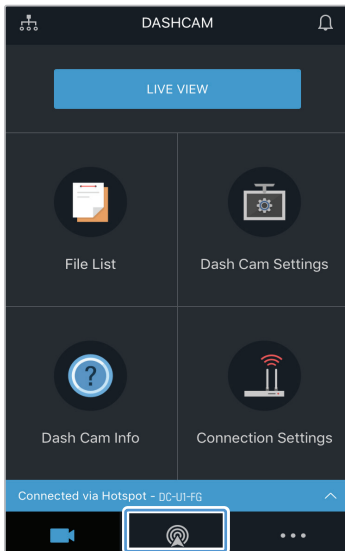
Tap Push Notification Settings.



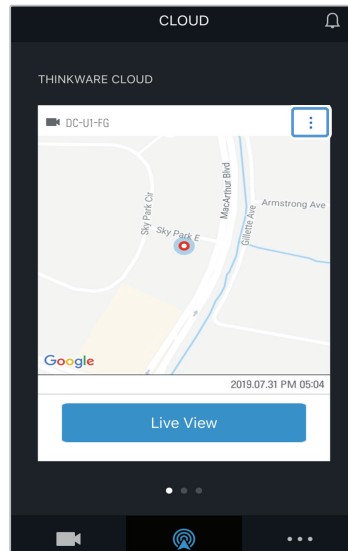
Tap Strong Impact Notification While Parked.

4.5.7 Viewing strong impact videos on the cloud service

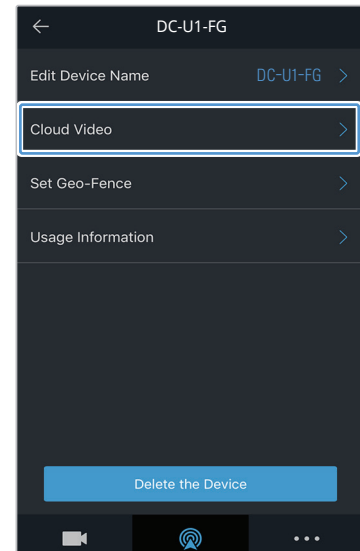
You can view strong impact videos uploaded on the cloud service if an impact is detected while driving or the vehicle is parked. Follow the instructions to view the impact videos.



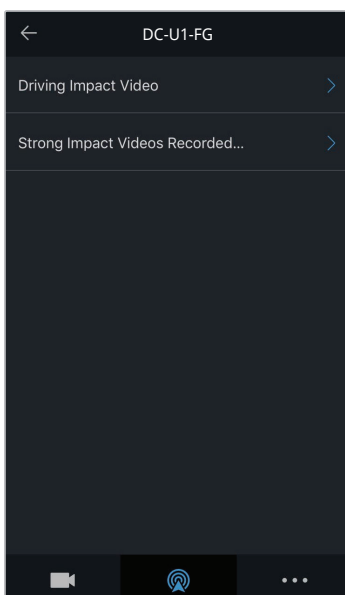
Tap .



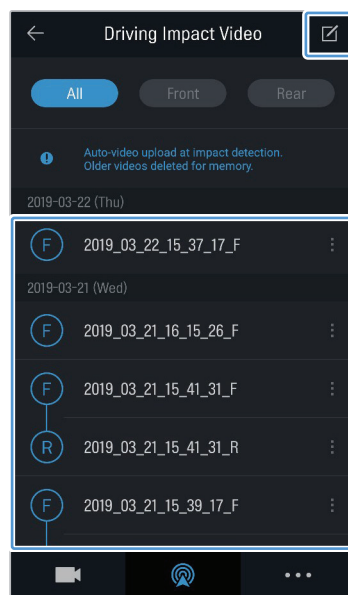
Tap .



Tap **Cloud Video**.





Select **Driving Impact Video** or **Strong Impact Videos Recorded While Parked**.



Tap a driving strong impact videos you wish to play.


- To download impact videos from the cloud server,

- 1 Tap  and select a video to download.

- 2 Tap  > **Download**. The downloaded video will be available in the **File List** menu.

- To delete impact videos from the cloud server,

- 1 Tap  and select a video to delete.

- 2 Tap  > **Yes/Delete**. The selected video will be deleted from the cloud server.



- You must turn on the network function to use the cloud service. To enable or disable this feature, refer to "6.6.3 Setting driving impact video upload" on page 52.
- The speed of upload and cloud service operation may vary depending on the status of your mobile network and the cloud server.

5. Using the PC viewer

You can view and manage the recorded videos and configure various product features on your PC.

5.1 System requirements

The following are the system requirements for running the PC viewer.

- For Windows
 - Processor: Intel Core i7 or higher
 - Memory: 8 GB or more
 - Operating system: Windows 10 or later (64-bit is recommended)
 - Other: DirectX 12 or higher / Microsoft Explorer version 7.0 or higher
 - GPU: Intel® HD Graphics 630 / NVIDIA GeForce GTX 1050 or higher
- For Mac
 - Processor: 2.2GHz Intel Core i7
 - Memory: 16GB 1600MHz DDR3
 - Operating system: Mac OS High Sierra 10.13.6, MacBook Pro (Retina, 15-inch, mid 2015)
 - GPU: Intel Iris Pro 1536MB
 - Integrated Graphics solutions that support 4K external displays (8GB RAM recommended with integrated graphics solutions): 4th generation Intel® Core™ processor family (Intel Haswell based CPUs) - (Intel® Iris™ Pro Graphics 5200 / Intel® Iris™ Graphics 5100, Intel® HD Graphics 5000 / 4600 / 4400 / 4200) AMD A10-7800 APU
 - Discrete Graphics cards that support 4K external displays: Nvidia GeForce® GTX™ 970 / 980 / TITAN Z / TITAN Black / TITAN / 780 & 780 Ti / 770 / 760 & 760 Ti / 750 & 750 Ti / 690, 680, 670, 660, 660 Ti, 650, 650 Ti BOOST, 650 Ti /AMD Radeon™ HD 7000 Series or higher



The PC viewer will not operate properly on PC systems running an operating system other than those listed in the system requirements.

5.2 PC viewer for Windows

5.2.1 Installing the PC viewer (for Windows)



You can download the latest PC viewer software from the THINKWARE website (<http://www.thinkware.com/Support/Download>).

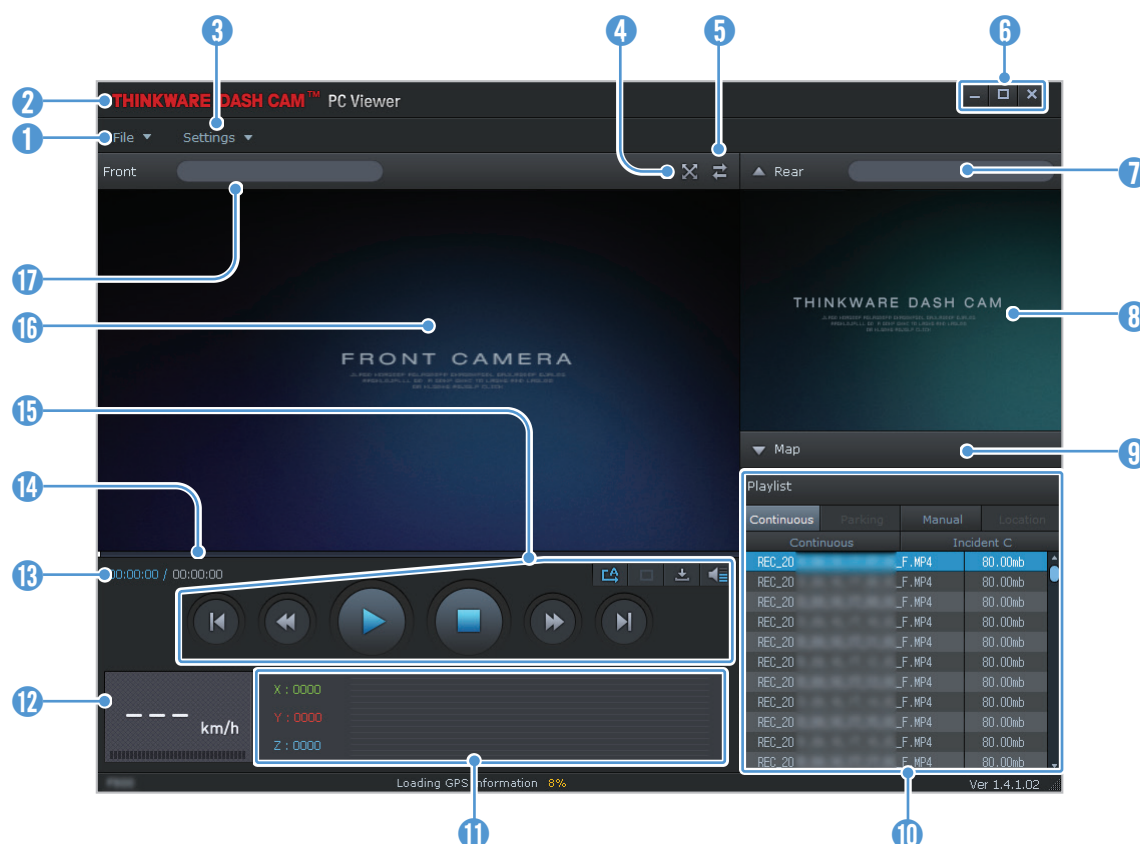
The PC viewer installation file (setup.exe) is stored in the root folder of the memory card that is provided with the product. Follow the instructions to install the PC viewer on your PC.

- 1 Insert the memory card into a memory card reader connected to your PC.
- 2 Run the installation file, and complete the installation according to the instructions given in the installation wizard.

After the installation is complete, there will be a shortcut icon to Thinkware Dashcam Viewer.

5.2.2 PC viewer screen layout (for Windows)

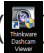
The following provides brief information about the PC viewer's screen layout.



Number	Description
1	Open a file, or save a video with a different name.
2	Visit the THINKWARE website.
3	View or configure the dashcam settings, and set the language for the PC viewer.
4	Display the current video in full screen. Tap the Back (⌘) button to return to the previous screen.
5	Switch between the front and rear videos.
6	Minimize, expand, or close the software.
7	Displays the rear camera video file name.
8	Displays the recorded rear camera video.
9	Display the map screen.
10	Displays the playlist.
11	Indicates the G sensor value at the time of recording.
12	Indicates the vehicle's driving speed at the time of recording.
13	Displays the current and total running time of the current video.
14	Displays the progress of video playback.
15	Play or control a video.
16	Displays the recorded front camera video.
17	Displays the front camera video file name.

5.2.3 Playing recorded videos on the PC viewer (for Windows)

Follow the instructions to play recorded videos.

- 1 Turn off the product and remove the memory card.
- 2 Insert the memory card into a memory card reader connected to your PC.
- 3 Double-click the shortcut to the PC viewer () to open the program. The video files in the memory card will be automatically added to the playlist in the bottom-right corner of the PC viewer screen. The playlist section layout is as follows.

Playlist

Continuous

Parking

Manual

Location

Continuous


Incident C

REC_20	_F.MP4	80.00mb
REC_20	_F.MP4	80.00mb
REC_20	_F.MP4	80.00mb
REC_20	_F.MP4	80.00mb
REC_20	_F.MP4	80.00mb
REC_20	_F.MP4	80.00mb
REC_20	_F.MP4	80.00mb
REC_20	_F.MP4	80.00mb
REC_20	_F.MP4	80.00mb
REC_20	_F.MP4	80.00mb
REC_20	_F.MP4	80.00mb

Select a folder.

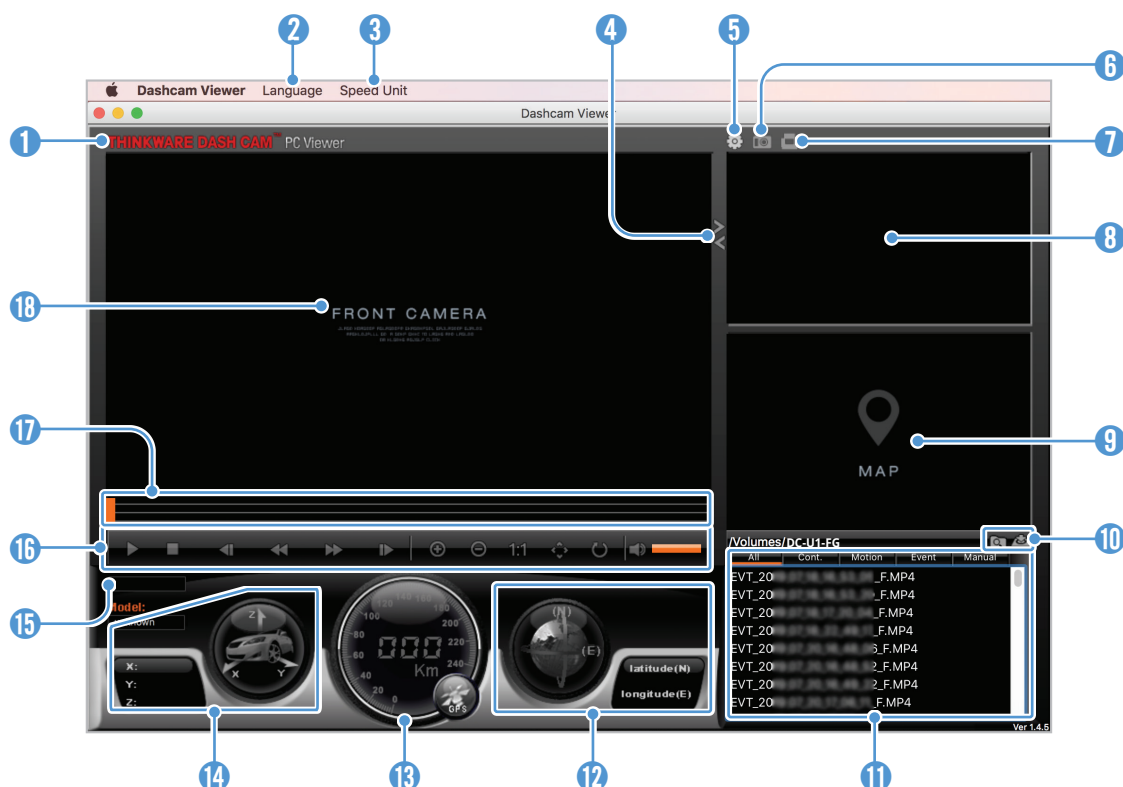
Displays a list of videos in the selected folder.

- 4 Double-click a video file after selecting a video folder, or click the Play (▶) button after selecting a video file. The selected video file will be played.

 If the video files on the memory card are not automatically added to the playlist when you run the PC viewer, click **File ▼ > Open**, select the removable storage device for the memory card, and click **Confirm**.

5.2.4 PC viewer screen layout (for Mac)


The following provides brief information about the PC viewer's screen layout.



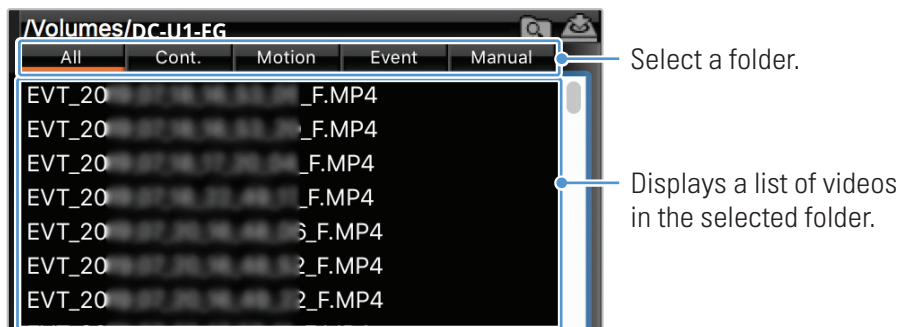
Number	Description
1	Visit the THINKWARE website.
2	Set the language for the PC viewer.
3	Set the speed unit.
4	Switch between the front and rear videos.
5	View or configure the dashcam settings.
6	Save the current scene.
7	Print the current scene.
8	Displays the recorded rear camera video.
9	Displays the map screen.
10	Open a file, or save a video with a different name.
11	Displays the playlist.
12	Displays the GPS information at the time of recording.
13	Indicates the vehicle's driving speed at the time of recording.
14	Indicates the G sensor value at the time of recording.
15	Displays the current and total running time of the current video.
16	Play or control a video.
17	Displays the progress of video playback.
18	Displays the recorded front camera video. Right-click this pane to display the current video in full screen.

5.2.5 Playing recorded videos on the PC viewer (for Mac)

Follow the instructions to play recorded videos.

- 1 Turn off the product and remove the memory card.
- 2 Insert the memory card into your Mac using a SD card reader or SD card adapter provided.
- 3 Open the PC viewer.
- 4 Click  and locate the memory card.

The video files in the memory card will be automatically added to the playlist in the bottom-right corner of the PC viewer screen. The playlist section layout is as follows.



- 5 Double-click a video file after selecting a video folder, or click the Play (▶) button after selecting a video file. The selected video file will be played.

6. Settings

You can set the product features according to your needs and preferences using the mobile viewer or the PC viewer. The following procedures are based on the mobile viewer.



The product will stop recording while configuring settings on the mobile viewer.

6.1 Managing the memory card

From the mobile viewer, tap **Dash Cam settings > Memory Card Settings** to manage the memory card settings.

Options	Description
Memory Partition	Select from Continuous Priority/Incident Priority/Parking Priority/Manual Priority/Driving Recording Only for the memory partition type.
Formatting Memory Card	In Formatting Memory Card , tap Format > OK to proceed with formatting the memory card.
Overwrite Videos	Select the desired modes to allow video overwriting.

6.2 Setting the Camera

From the mobile viewer, tap **Dash Cam settings > Camera Settings** to adjust the camera settings.

Options	Description
Resolution-front/rear	Select the desired resolution for the front and rear camera.
Brightness-front	Select from Dark/Mid/Bright for the brightness of the front camera.
Brightness-rear	Select from Dark/Mid/Bright for the brightness of the rear camera.
Rotate Rear Camera	Select from Enabled/Disabled for rotating rear camera.

6.3 Setting recording features

From the mobile viewer, tap **Dash Cam settings > Record Settings** to manage the recording features settings.

Options	Description
Continuous Mode Incident Recording Sensitivity	Select from Disabled/Lowest/Low/Mid/High for the sensitivity.
Super Night Vision 2.0	Select from Disabled/Continuous Mode/Parking Mode/Continuous+Parking for the Super Night Vision feature.
Parking Mode	Select from Disabled/Motion Detection/Time Lapse/Energy Saving for the parking mode.
Impact Sensitivity in Parking Mode	Select one of the five parking mode sensitivity levels.
Motion Detection Sensitivity	Select one of the five motion detection sensitivity levels.
Record Timer	Select the desired record time. To turn off the record timer, select Disabled .
Battery Protection	Select from Enabled/Disabled for the battery protection.
Battery cutoff voltage	Select from 12V (11.6-12.3)/24V (23.2-24.6) for the battery cutoff voltage.
Wintertime Battery Protection	Select the month(s) to apply the battery protection feature.
RADAR	Select from Enabled/Disabled for RADAR module.



- To use parking mode, you must install the hardwiring cable. If continuous power is not supplied to the product, the product will stop recording when the vehicle engine is turned off.
- The vehicle battery will not be charged while the vehicle is parked. If you record in parking mode for an extended period, the vehicle's battery may be depleted and you may not be able to start the vehicle.



- For more information about parking mode, refer to "3.5 Using parking mode" on page 21.
- The battery cutoff voltage can be set only when the **Battery Protection** setting is set to **Enabled**.
- If the off voltage value is too low, the product may consume the battery completely depending on the conditions like the vehicle type or temperature.

6.4 Setting road safety features

From the mobile viewer, tap **Dash Cam settings > Road Safety Settings** to manage the road safety features settings.

Options	Description
Safety Cameras	Select from Enabled/Disabled for the safety cameras.
Mobile Zone Alert	Select from Enabled/Disabled for the mobile zone alert.
Vehicle Type	Select the vehicle type from Sedan/SUV/Truck (Bus) .
Initialize ADAS	In Initialize ADAS , tap Initialize > OK to proceed with initializing.
LDWS (Lane Departure Warning)	Select from Disabled/Low/Mid/High for the LDWS sensitivity.
LDWS Speed	Select from 50km/h / 60km/h / 80km/h / 100km/h for the LDWS detection speed.
FCWS (Forward Collision Warning)	Select from Disabled/Low/Mid/High for the sensitivity.
Low Speed FCWS	Select from Disabled/Low/Mid/High for the sensitivity.
FVDW (Front Vehicle Departure Warning)	Select from Enabled/Disabled for the FVDW feature.

6.5 Configuring the system settings

From the mobile viewer, tap **Dash Cam Settings > System Settings** to configure the hardware system settings.

Options	Description
Language	Select the desired language.
Volume	Select the desired volume level for each feature (Safety Cameras/ADAS/System).
Security LED	Select from Enabled/Disabled for the security LED.
Rear Camera LED	Select from Enabled/Disabled for rear camera LED.
Time Zone	Select the desired time zone.
Daylight Saving	Select from Enabled/Disabled for the daylight saving.
Speed Unit	Select from km/h/mph for the speed unit.
Speed Stamp	Select from Enabled/Disabled for the speed stamp.
Wi-Fi Frequency	Select from 2.4GHz/5GHz for the Wi-Fi frequency.
Voice Recording	Select from Enabled/Disabled for the voice recording.



If you select **0** for the volume level, the voice guidance will be disabled.

6.6 Configuring network function settings

From the mobile viewer, tap **Dash Cam Settings > Network Function Settings** for network function and driving impact notification.

Options	Description
Network Function	Select from Enabled/Disabled for network function.
Strong Impact Notification While Driving	Select the desired sensitivity for strong impact notification while driving.
Upload Driving Impact Video	Select from Enabled/Disabled for uploading driving impact videos to the cloud server.
Notify impact while parked	Select from Enabled/Disabled for impact notification.
Strong Impact Notification While Parked	Select the desired sensitivity for strong impact notification while parked.
Upload Strong Impact Videos Recorded While Parked	Select from Enabled/Disabled for uploading parked impact videos to the could server.

7. Accessing the product information

New users may benefit from the basic product information that can be accessed from the Menu screen.

7.1 Viewing the product information

From the mobile viewer, tap **Dash Cam Info** to view product information. The following product information will be displayed on the screen.

- Model Name
- Memory Size
- Firmware Ver.
- LOCAL ID
- Safety Camera Ver.
- GPS Info

7.2 Accessing and configuring the GPS

A GPS module is used to include the location data in the recorded videos. From the mobile viewer, tap **Dash Cam Info > GPS Info** to view the GPS features. The connection status, signal strength, time (UTC), vehicle speed, current altitude, and Horizontal Dilution of Precision (HDOP) are displayed on the screen.

Tap  to initialize the GPS, and allow it to locate the current position.



Horizontal Dilution of Precision (HDOP)

HDOP is a value that refers to GPS deviation due to satellite positioning.

8. Upgrading the firmware

A firmware upgrade is provided to enhance the product's features, operation or to increase stability. For optimal operation of the product, ensure that you keep the firmware up to date.

Follow the instructions to upgrade the firmware.

- 1 On your PC, open a web browser and go to <http://www.thinkware.com/Support/Download>.
- 2 Select the product and download the latest firmware upgrade file.
- 3 Unzip the downloaded file.
- 4 Disconnect power to the product and remove the memory card.
- 5 Open the memory card on a PC and copy the firmware upgrade file to the root folder of the memory card.
- 6 While the power is disconnected from the product, insert the memory card into the memory card slot on the product.
- 7 Connect the power cable to the product, and then turn on the power (ACC ON) or start the engine to turn on the product. The firmware upgrade starts automatically, and the system will restart once the firmware update is completed.




Do not disconnect the power or remove the memory card from the product during the upgrade. Doing so may cause serious damage to the product, or to the data stored in the memory card.



You can also update the firmware from the mobile viewer and the PC viewer.

9. Resetting the product

Press and hold the voice recording () and manual recording (**REC**) buttons simultaneously until you hear beeps.

10. Troubleshooting

The following table lists the problems users may encounter while using the product and measures to resolve them. If the problem persists after taking the measures provided in the table, contact the customer service center.

Problems	Solution
Cannot power on the product	<ul style="list-style-type: none">• Make sure the power cable (the car charger or the hardwiring cable) is connected to the vehicle and the product properly.• Check the vehicle's battery level.
The voice guide and/or buzzer do not sound.	Check if the volume is set to the minimum.
The video is unclear or hardly visible.	<ul style="list-style-type: none">• Ensure that the protective film on the camera lens has been removed. The video may look unclear if the protective film is still on the camera lens.• Check the installation location of the front or rear camera, turn on the product, and then adjust the camera's viewing angle.
The memory card cannot be recognized.	<ul style="list-style-type: none">• Ensure that the memory card has been inserted in the correct direction. Before inserting the memory card, ensure that the metal contacts on the memory card are facing toward the lens of the product.• Turn off the power, remove the memory card, and then check to ensure that the contacts in the memory card slot are not damaged.• Ensure that the memory card is an authentic product distributed by THINKWARE. THINKWARE does not guarantee compatibility and normal operation of third-party memory cards.
The recorded video cannot be played on a PC.	The recorded videos are stored as MP4 video files. Ensure that the video player installed on your PC supports the playback of MP4 video files.
GPS signal cannot be received even though the external GPS receiver is installed.	The GPS signal may not be received in out-of-service areas, or if the product is located between tall buildings. Also, GPS signal reception may not be available during storms or heavy rain. Try again on a clear day at a location that is known to have a good GPS reception. It may take up to 5 minutes until GPS reception is established.

[Before contacting a service center](#)

Please back up all important data stored in the memory card. The data in the memory card may be deleted during repair. Every product requested for repair is regarded as a device that has had its data backed up. The customer service center does not back up your data. THINKWARE is not responsible for any loss, such as data loss.

11. Specifications

To see the product specifications, refer to the following table.

Item	Specification	Remarks
Model name	DC-U1-FG	
Dimensions / Weight	64 x 111.5 x 32 mm / 112 g 2.5 x 4.4 x 1.3 inch / 0.24 lb	
Memory	microSD memory card	32 GB, 64 GB, 128 GB (UHS-I)
Recording mode	Continuous Rec	Records videos in 1-minute segments (dual channels are supported for recording the front and rear view)
	Incident Rec	Records 10 seconds before and after the incident (total 20 seconds)
	Manual Rec	Records from 10 seconds before and 50 seconds after manually starting the recording (total 1 minute)
	Parking Rec (parking mode)	(Optional)
	Audio Recording	Press the voice recording button to turn the audio recording on or off
Camera sensor	8.42M pixels, 1/1.8" Sony Exmor R STARVIS	
Angle of view (Lens)	Approximately 150° (diagonally)	
Video	UHD (3840 x 2160) / H.264 / file extension: MP4	
Resolution	Front: 4K UHD(3,840 x 2,160) 30 fps/ 2K QHD(2,560x1440p) 60fps Rear : 2K QHD(2,560 x 1,440p) 30fps	
Audio	HE-AAC	
Acceleration sensor	3-axis acceleration sensor (3D, ±3G)	5 levels for sensitivity adjustment available
Rear camera (optional)	V-IN port	Optional accessory that requires separate purchase
GPS	Embedded GPS	Safety driving section alert supported
Power input	DC 12 / 24 V supported	
Power consumption	2ch: 5.1 W / 1ch: 3.1 W (mean)	Except for the fully charged supercapacitor / GPS
Auxiliary power unit	Super capacitor	
LED indicator	GPS LED, Rec LED, Wi-Fi LED	
Alarm	Built-in speakers	Voice guide (buzzer sounds)
Operating temperature	14 – 140°F / -10 – 60°C	
Storage temperature	-4 – 158°F / -20 – 70°C	
Connection Interface	1 x V-IN port	

<http://www.thinkware.com>