



PMK-V363

INSTALLATION MANUAL
For Crew Vans

Thank you for purchasing the EchoMaster Ford Transit HD Camera Package



Table of Contents

Page 4 -HD Mirror Monitor / Harness

Page 8 - FTV-CAM-EXT-HAR

Page 12 - HD Camera

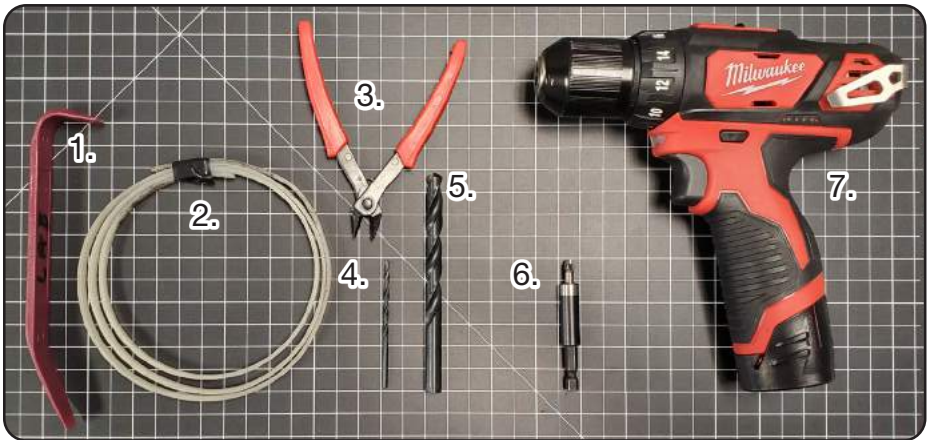
WHAT'S INCLUDED:



- PMM-V363 HD Mirror Monitor
- CAM-V363 HD Camera with Vehicle Specific Housing
- PMK-FTV-HAR Vehicle Specific Mirror Monitor Harness
- FTV-CAM-EXT-HAR Camera Extension Harness
- Hardware Pack



TOOLS NEEDED:



1. Plastic Trim Tool
2. Wire Fishing Tool
3. Diagonal Cutters
4. 7/64" Drill Bit or Unibit
5. 3/8" Drill Bit or Unibit
6. Phillips Bit with Bit Holder
7. Drill

PMK-V363

INSTALLATION GUIDE

FULL VIEW MIRROR / HARNESS FITTING INSTRUCTIONS

STEP 1:

Remove the dome light housing using a plastic trim tool to push forward and release the two clips on the rear side of the front dome light panel and pop down and pull towards the rear of the vehicle. Reference the pictures below for the locations of the clips.

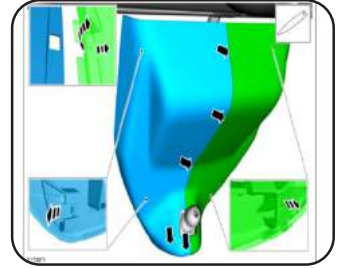


If the vehicle is equipped with the overhead tray, the dome light housing will be slightly different. It may be removed in a similar fashion.



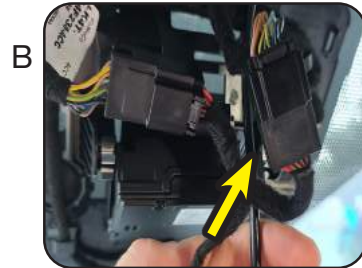
STEP 2:

Using a plastic trim tool, remove the shroud from behind where the rear view mirror would be to gain access to the wiring. Remove the center cap from the mirror shroud.



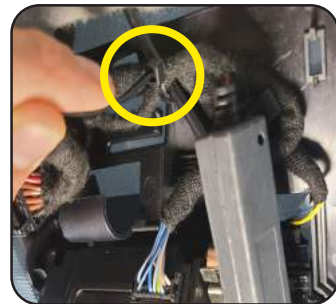
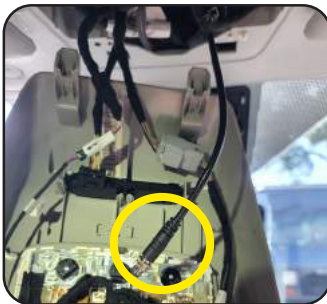
STEP 3:

After removing the mirror shroud, locate the 12 pin in-line connector (A). Connect the 12 pin T-Harness in-line at this location and route the mirror side of the harness down and towards the mirror location (B).



STEP 4:

Route the Mini-Din connector end of the harness from behind the mirror shroud to the dome light opening exposed in step 1. Fasten the remainder of the harness behind the mirror shroud to the factory wiring using the supplied wire ties.



STEP 5:

Install the HD Full-View mirror by starting with the top of the mirror mount at the 10 o'clock position and place it on the twist lock mount. Twist the base of the mirror until the top of the mirror is at the 12 o'clock position. You should feel the alignment tab click into place.



STEP 6:

Route the end of the cable with the white mirror connector down to the back of the mirror along the right hand side of the mirror shroud area. This is where the inline filter (Outlined in yellow) will be secured.



STEP 7:

Install the mirror connector cover (A), then plug the connector into the back of the mirror (B).

A



B



STEP 8:

Reinstall the shroud behind the mirror. At this time, ensure that the flip dimmer located on the bottom of the mirror is flipped forward towards the passenger compartment (rear of the vehicle).



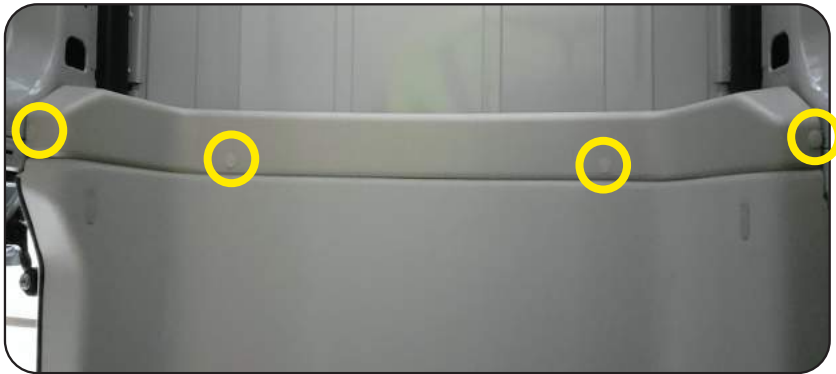
FTV-CAM-EXT-HAR FITTING INSTRUCTIONS

Harness Routing Overview



STEP 1:

Remove the four push clips (Circled in yellow) using a push clip removal tool to be able to pull out the headliner trim piece. Set the trim piece aside. This provides access to route the extension harness over the headliner to the dome light opening.



STEP 2:

Continue to the back of the vehicle and remove the 2 corner wire covers (A). This will allow the center wire cover to slide towards the driver's side to route the extension harness (B).



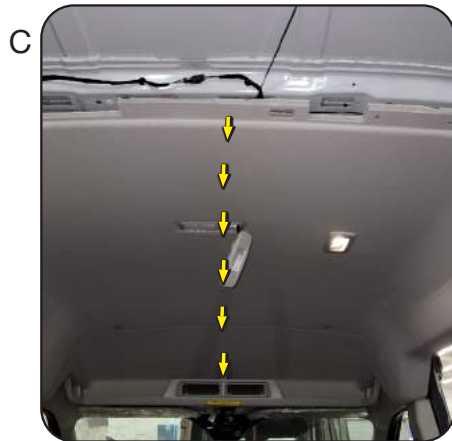
STEP 3:

Remove the driver's side wire cover by sliding it towards the rear of the vehicle. Then, pull the front end of the cover out, away from the wall, while also sliding the cover forward. The cover should slide off of its locking tabs exposing the factory wiring harness underneath. If removal of the cover is not possible, then proceed with tucking the extension harness behind the cover.



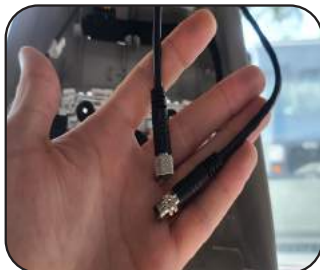
STEP 4:

Next, using a nylon panel removal tool, pop out the center overhead cargo lamp from the headliner (A). Then, feed a wire fishing tool from the back of the headliner to the front dome light opening exposed in the beginning of the install (B). We will be routing the monitor connector end of the extension harness from the rear of the headliner towards the front of the vehicle (C).



STEP 5:

With the monitor connector extension harness end in the dome light opening, make the connection to the mirror power harness installed previously and still hanging in the dome light opening. With the connection made, pull the extra harness back towards the rear of the vehicle until taut. Then, secure the harness to the cargo lamp wiring with a zip tie.



STEP 6:

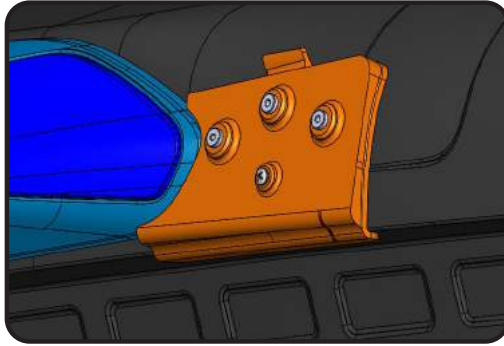
Route the extension cable to the rear of the vehicle while securing the harness to the factory wiring exposed previously by removing the side wire track cover. When you reach the rear of the vehicle, route the wire to behind the CHMSL (3rd Brake Light) following the factory vehicle wiring as a guide. Bundle any extra length of the harness and secure it to the factory wiring using a zip tie.



HD CAMERA FITTING INSTRUCTIONS

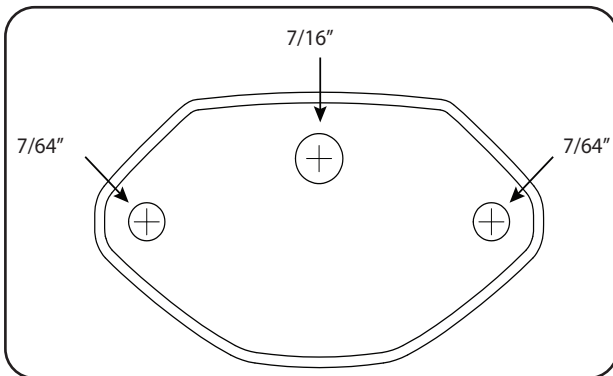
STEP 1:

Using the supplied template, line it up with the right edge of the CHMSL. The bottom lip of the template should wrap around the top of the rear door frame. You may need to pull down the rubber door seal to allow the template to seat properly into place. Place the template as shown below.



STEP 2:

Using a standard $7/64$ " drill bit and the template as a guide, drill the three holes needed using the drill guides in the template to mount the camera. Using a step bit, drill the top hole out to $7/16$ " using the diagram below for sizing reference.



STEP 3:

Route the camera cable into the vehicle and secure the camera to the vehicle with the supplied screws. Be sure to place the screw caps over the screws when finished.



STEP 4:

Connect the camera to the camera extension harness and secure any excess wire within the vehicle body.





Phone – 866-931-8021

E-Mail – support@aampglobal.com



EchoMaster is a Power Brand of AAMP Global

EchoMaster.com

REV. DC0722